

Annex C

Graphical Presentations

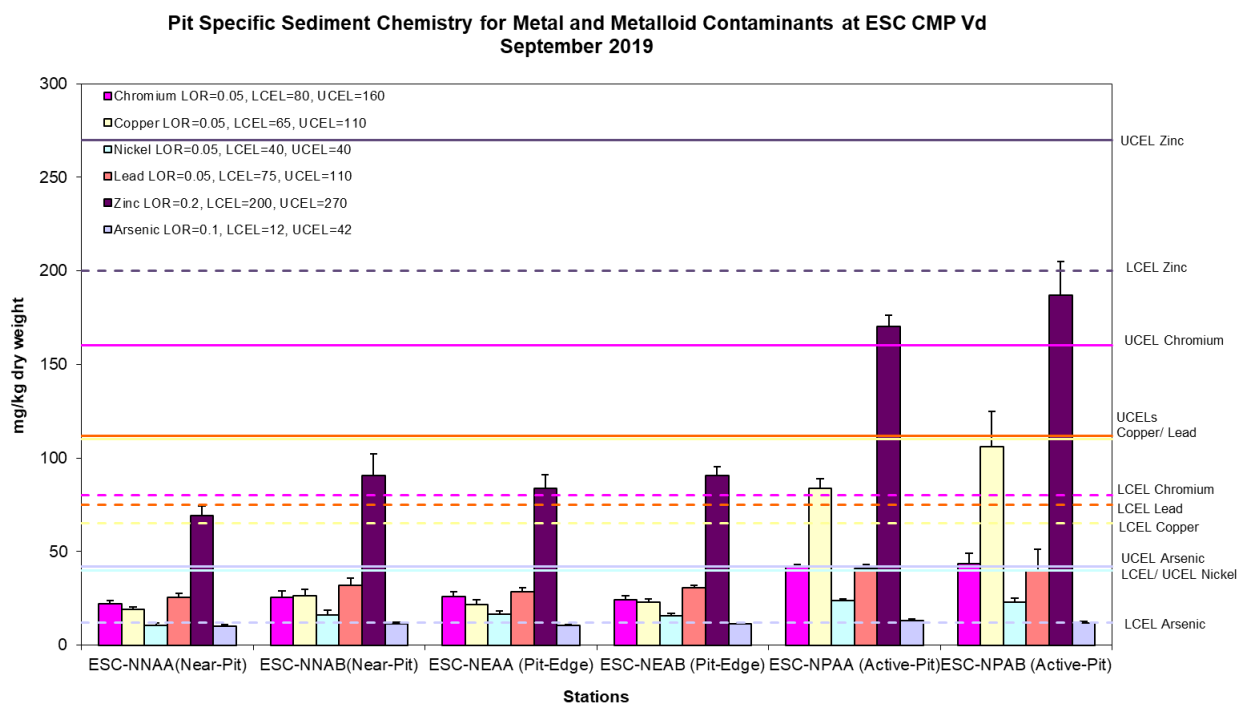


Figure 1: Concentration of Metals and Metalloid (Cr, Cu, Ni, Pb, Zn, As; mg/kg dry weight; mean +SD) in sediment samples collected from Pit Specific Sediment Chemistry Monitoring for ESC CMP Vd in August 2019.

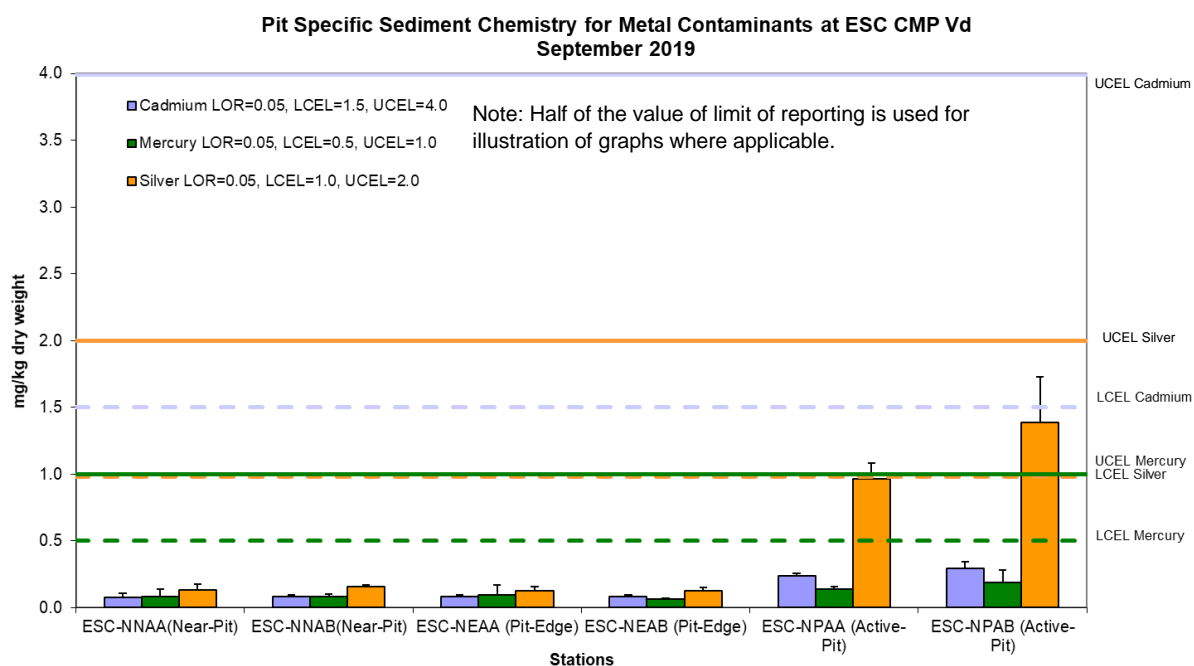


Figure 2: Concentration of Metals (Cd, Hg, Ag; mg/kg dry weight; mean +SD) in sediment samples collected from Pit Specific Sediment Chemistry Monitoring for ESC CMP Vd in September 2019.

Source: P:\Projects\0400720 CEDD CMP EM&A 2017-2020\02 Deliverable\05 CMP Monthly Report\30 Monthly September 2019

Date: October 2019

**Environmental
Resources
Management**



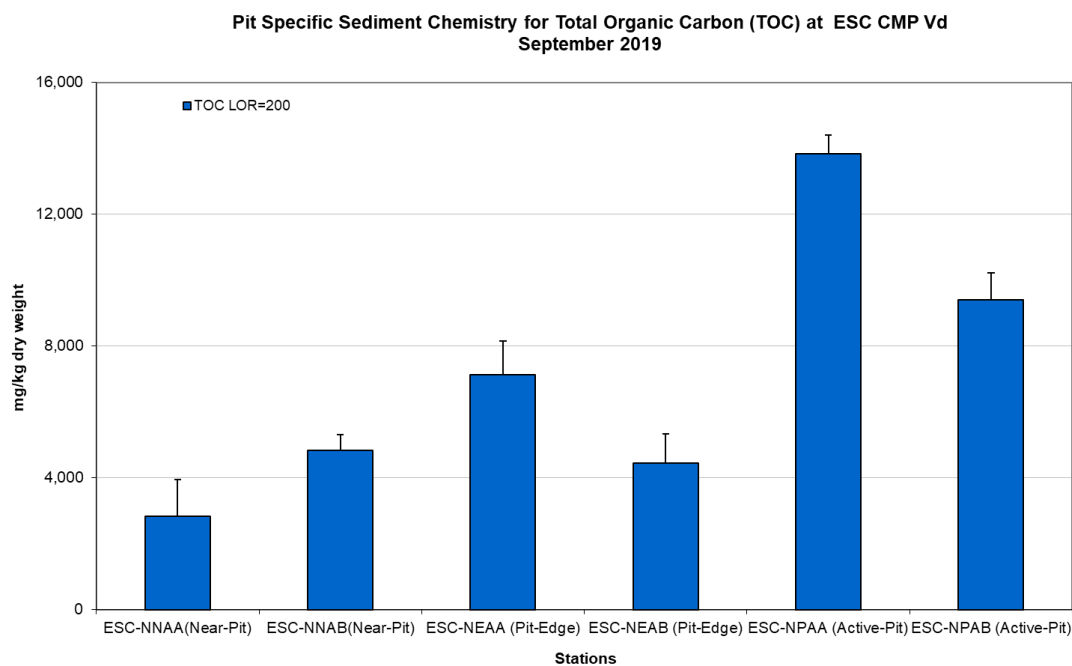


Figure 3: Concentration of Total Organic Carbon (TOC) (mg/kg dry weight; mean +SD) in sediment samples collected from Pit Specific Sediment Chemistry Monitoring for ESC CMP Vd in September 2019.

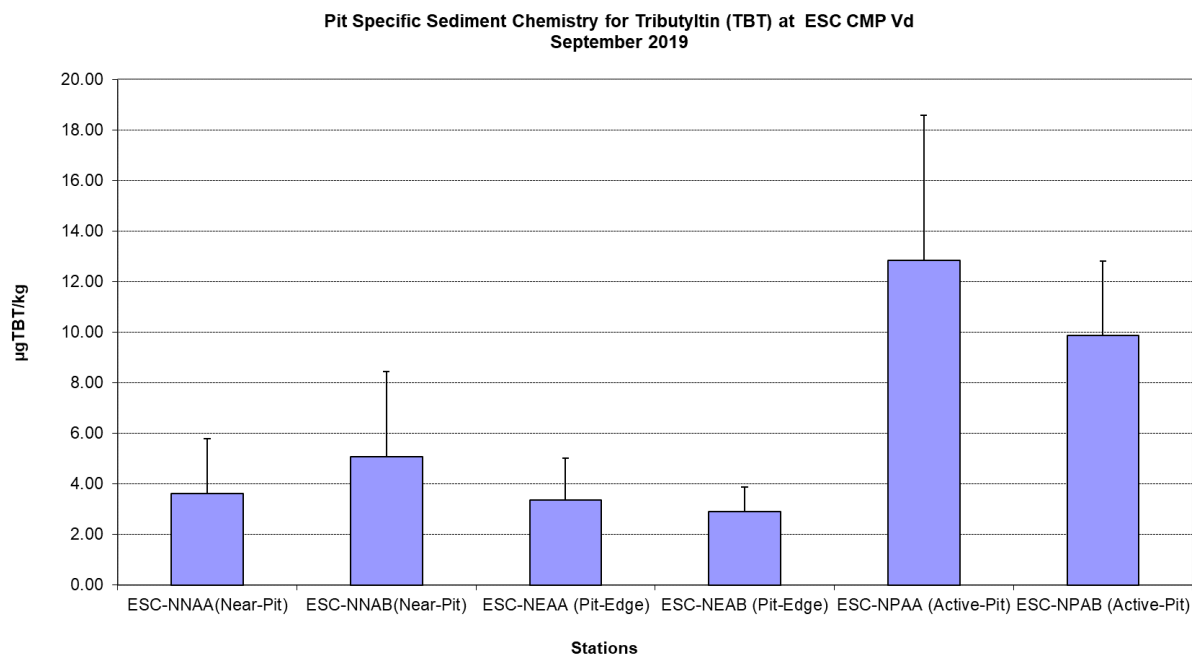


Figure 4: Concentration of Tributyltin (TBT) (µg TBT/kg; mean +SD) in sediment samples collected from Pit Specific Sediment Chemistry Monitoring for ESC CMP Vd in September 2019.

**Cumulative Impact Sediment Chemistry for Metal and Metalloid Contaminants at ESC CMPs
August 2019**

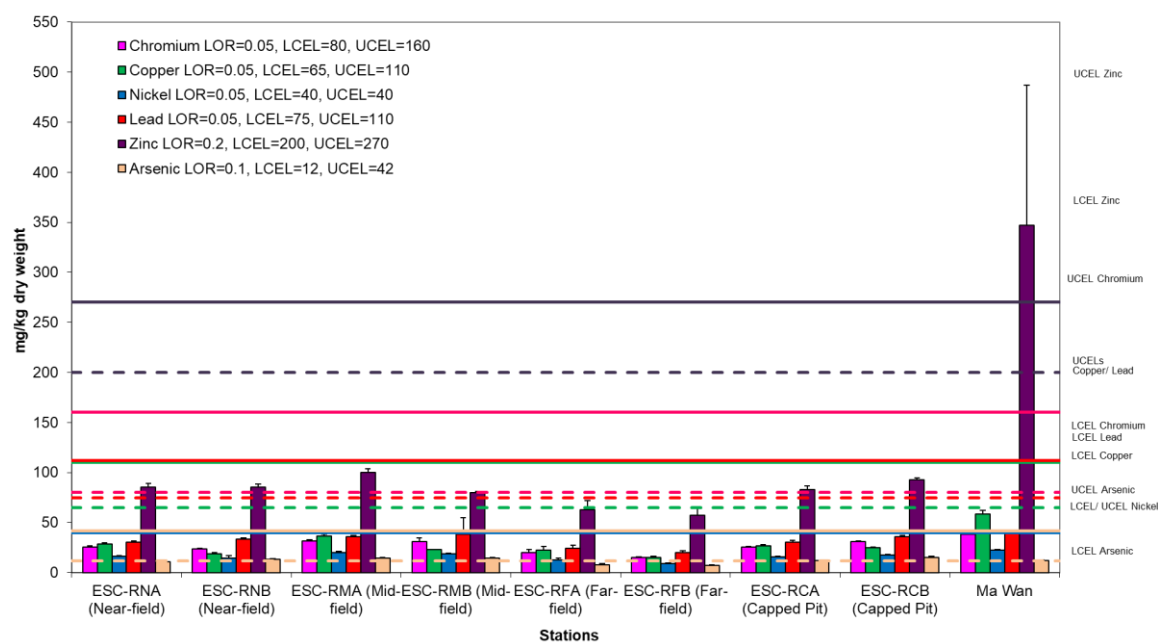


Figure 5: Concentration of Metals and Metalloid (Cr, Cu, Ni, Pb, Zn, As; mean +SD) in sediment samples collected from Cumulative Impact Sediment Chemistry Monitoring for ESC CMPs in August 2019.

**Cumulative Impact Sediment Chemistry for Metal Contaminants at ESC CMPs
August 2019**

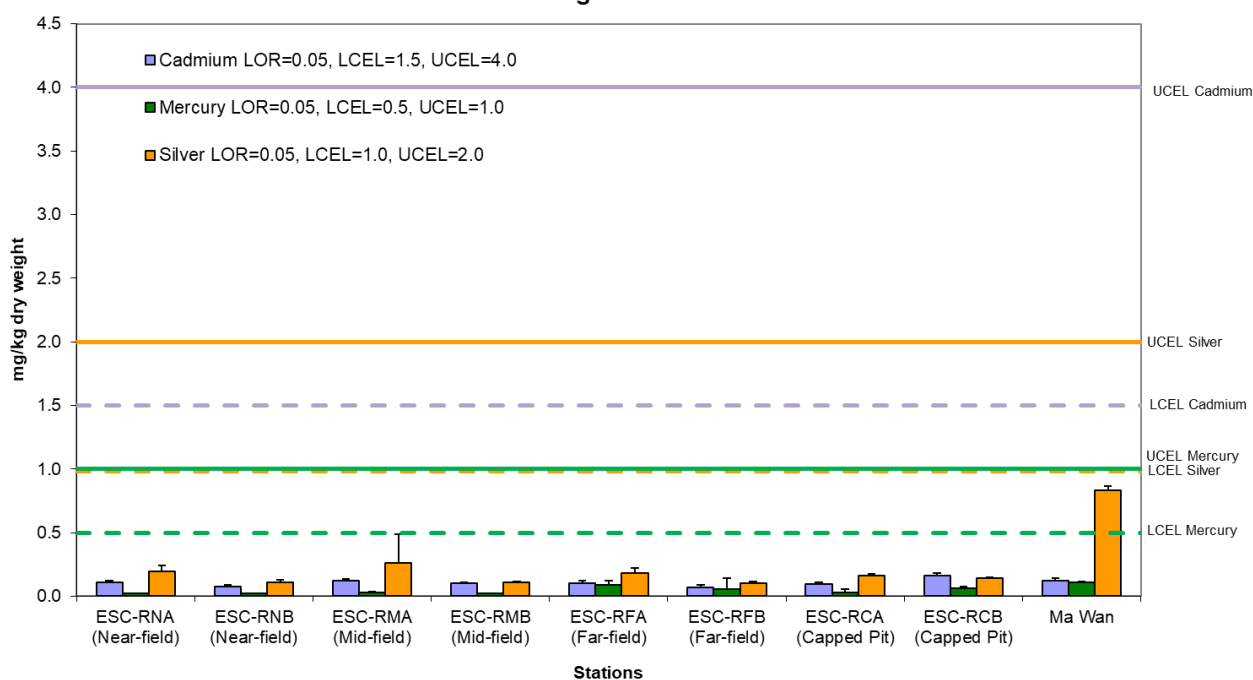


Figure 6: Concentration of Metals (Cd, Hg, Ag; mean +SD) in sediment samples collected from Cumulative Impact Sediment Chemistry Monitoring for ESC CMPs in August 2019.

Source: P:\Projects\0400720 CEDD CMP EM&A 2017-2020\02 Deliverable\05 CMP Monthly Report\30 Monthly September 2019

Date: October 2019

**Environmental
Resources
Management**



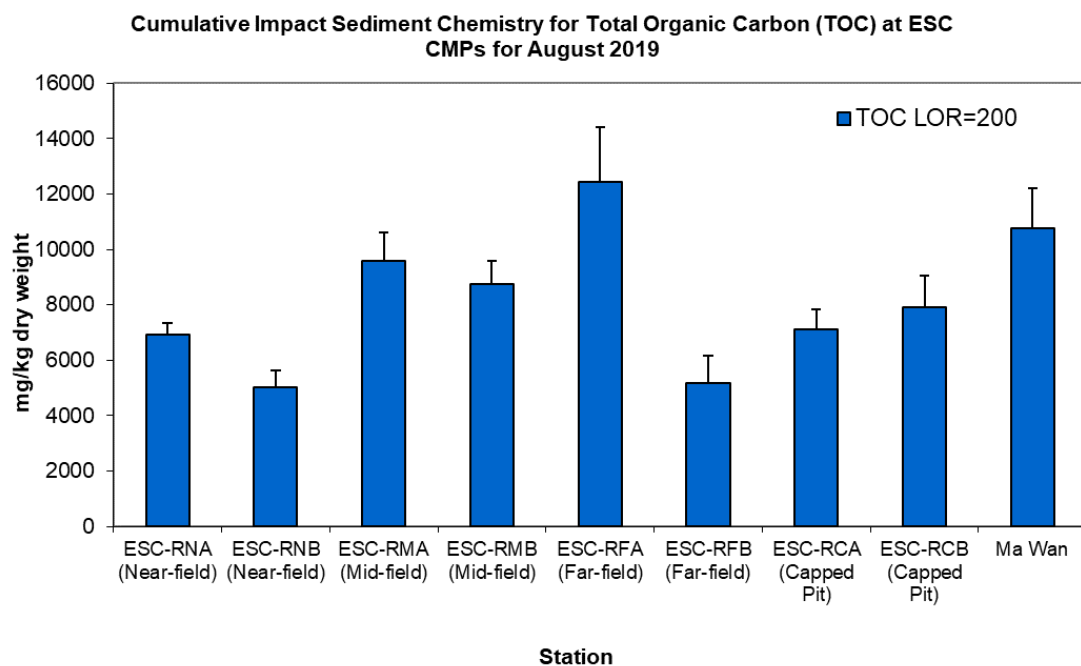


Figure 7: Concentration of Total Organic Carbon (TOC) (mg/kg dry weight; mean +SD) in sediment samples collected from Cumulative Impact Sediment Chemistry Monitoring for ESC CMPs in August 2019.

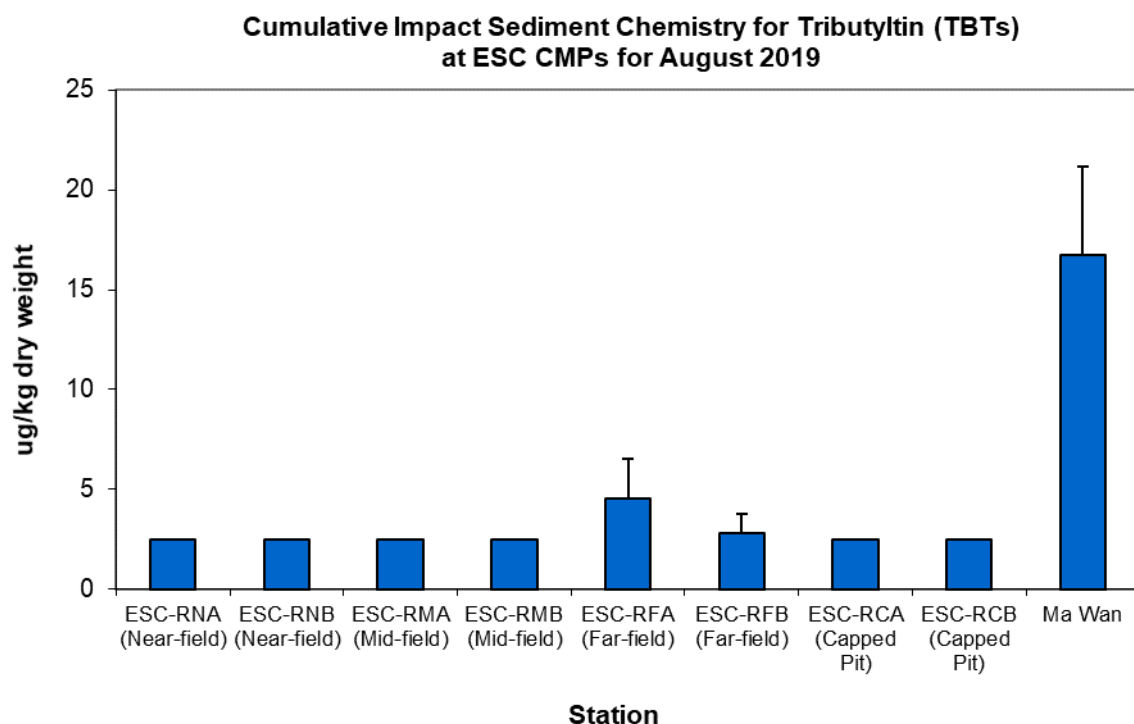


Figure 8: Concentration of Tributyltin (μg TBT/kg; mean +SD) in sediment samples collected from Cumulative Impact Sediment Chemistry Monitoring for ESC CMPs in August 2019.

Source: P:\Projects\0400720 CEDD CMP EM&A 2017-2020\02 Deliverable\05 CMP Monthly Report\30 Monthly September 2019

Date: October 2019

**Environmental
Resources
Management**

