

Annex B

Monitoring Results

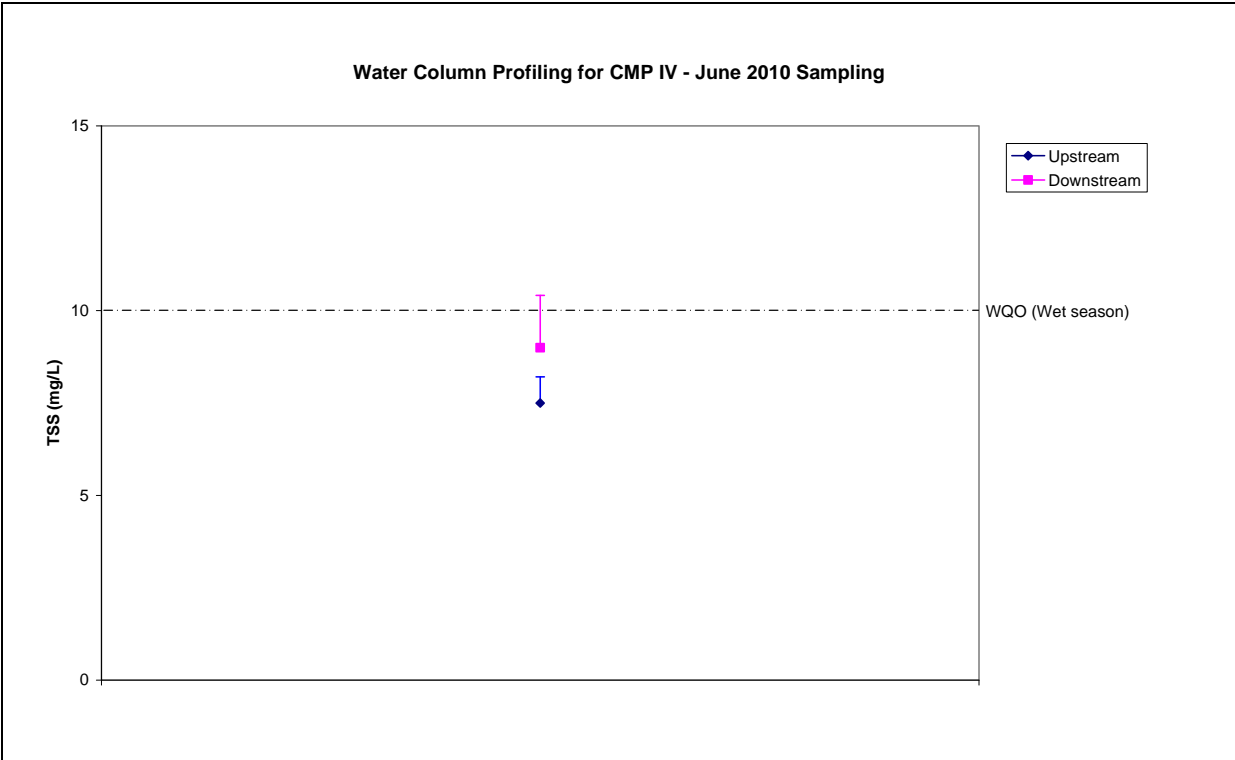


Figure 1: Levels of Total Suspended Solids (mean \pm SD) during Water Column Profiling for CMP IV in June 2010.

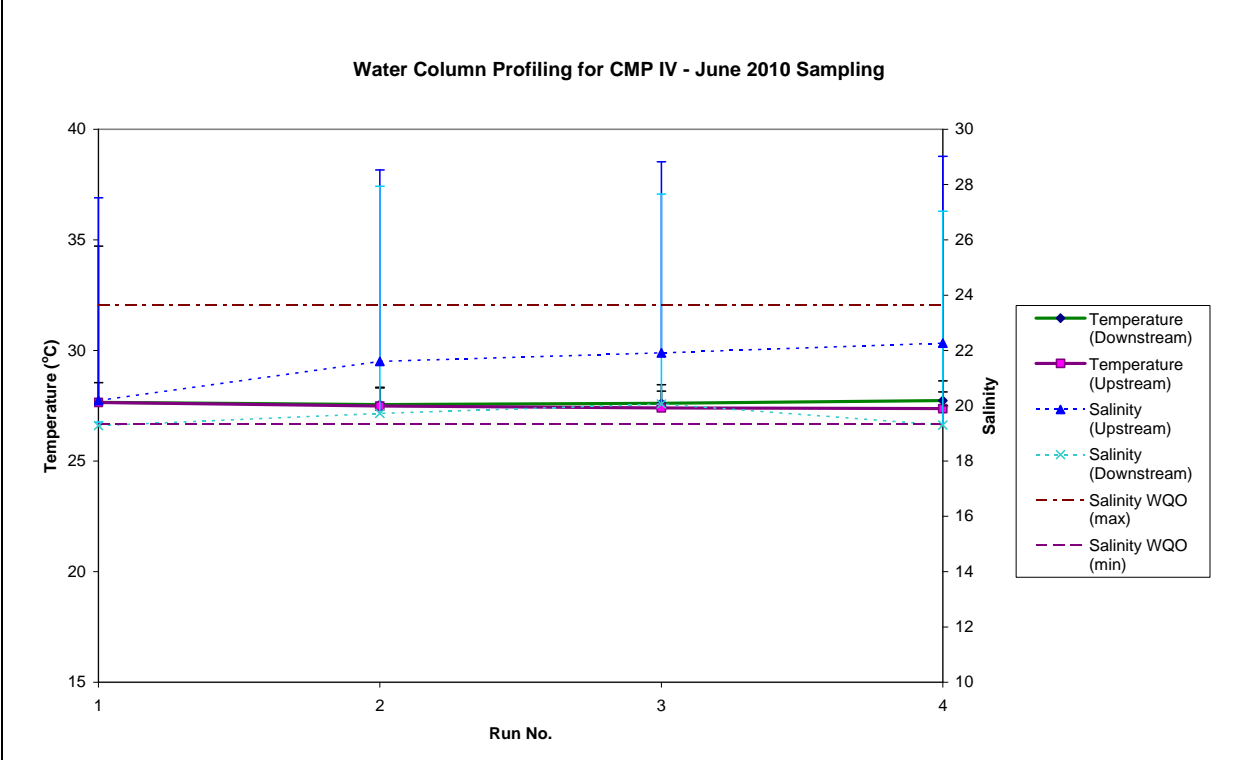


Figure 2: Salinity and Temperature (mean \pm SD) during Water Column Profiling for CMP IV in June 2010.

Source: H:\Team\EM\GMS Projects\0103262 CEDD EM&A for CMP at Sha Chau (2009 - 2013)\06 Contractor Submission (LAM)\06.9 Water Column Profiling CMP IV\June 2010
 Date: 22/07/2010

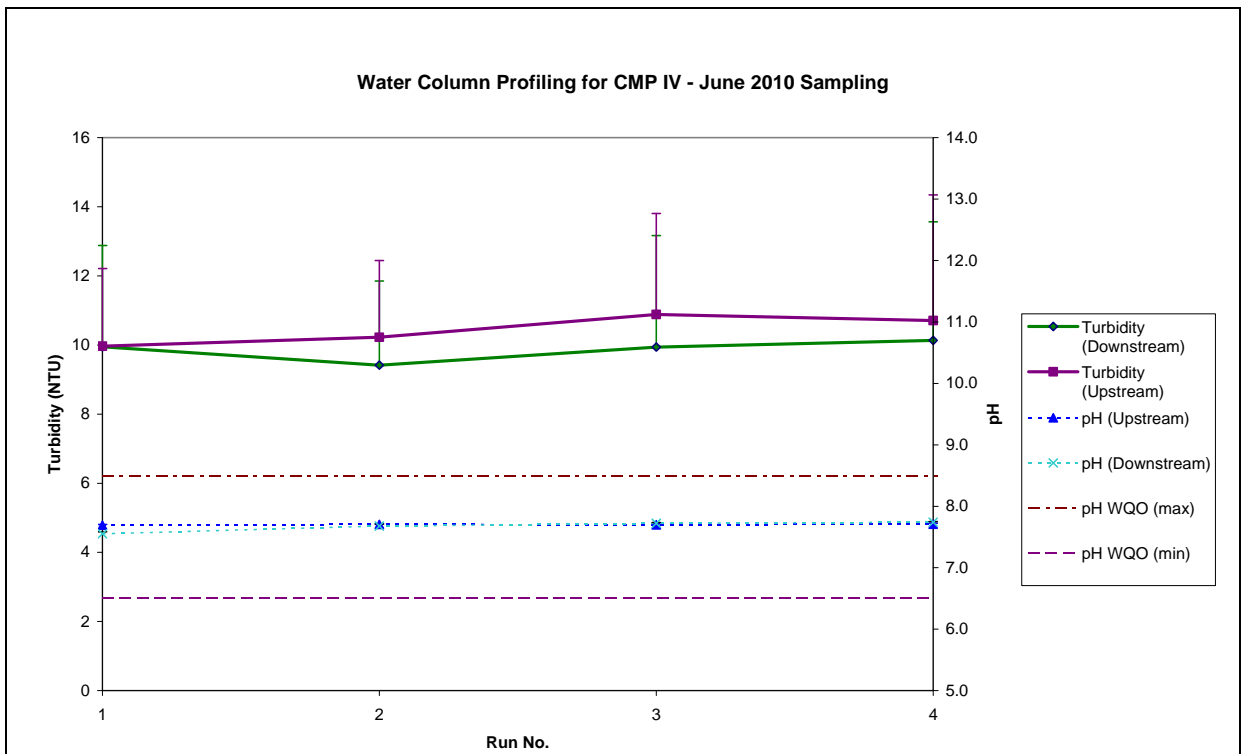


Figure 3: Turbidity and pH (mean ± SD) during Water Column Profiling for CMP IV in June 2010.

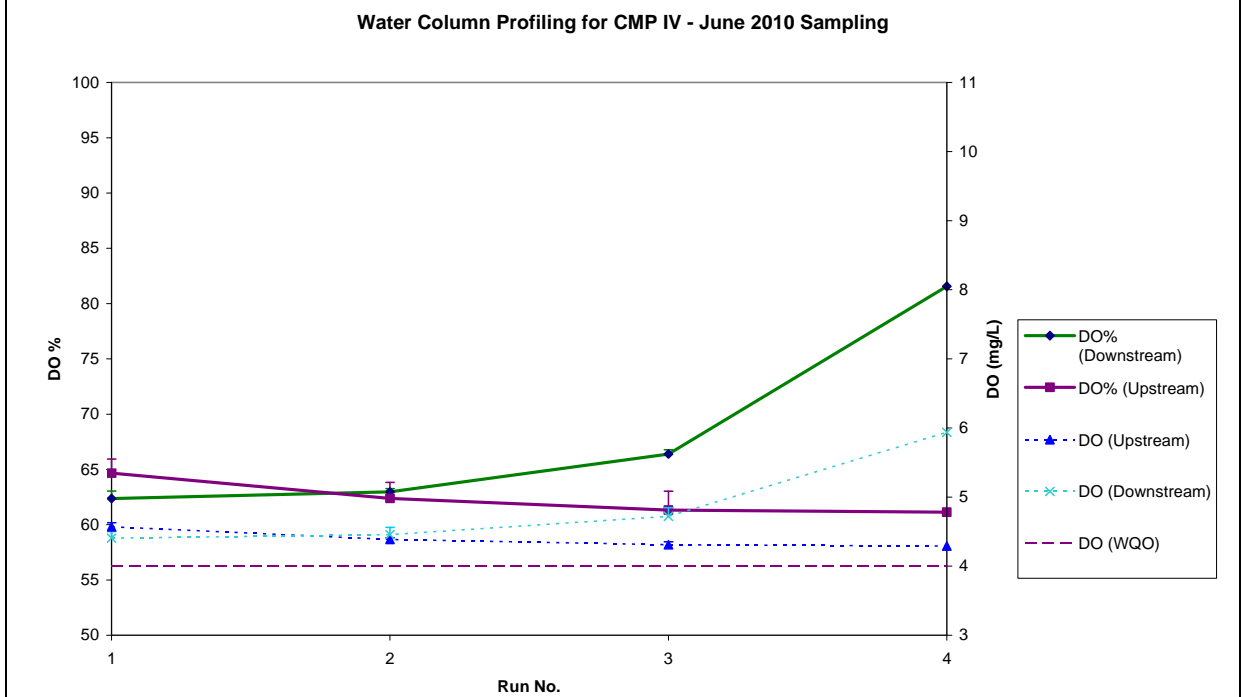


Figure 4: Dissolved Oxygen (mean ± SD) during Water Column Profiling for CMP IV in June 2010.

Source: H:\Team\EM\GMS Projects\0103262 CEDD EM&A for CMP at Sha Chau (2009 - 2013)\06 Contractor Submission (LAM)\06.9 Water Column Profiling CMP IV\June 2010
 Date: 22/07/2010

Environmental Resources Management



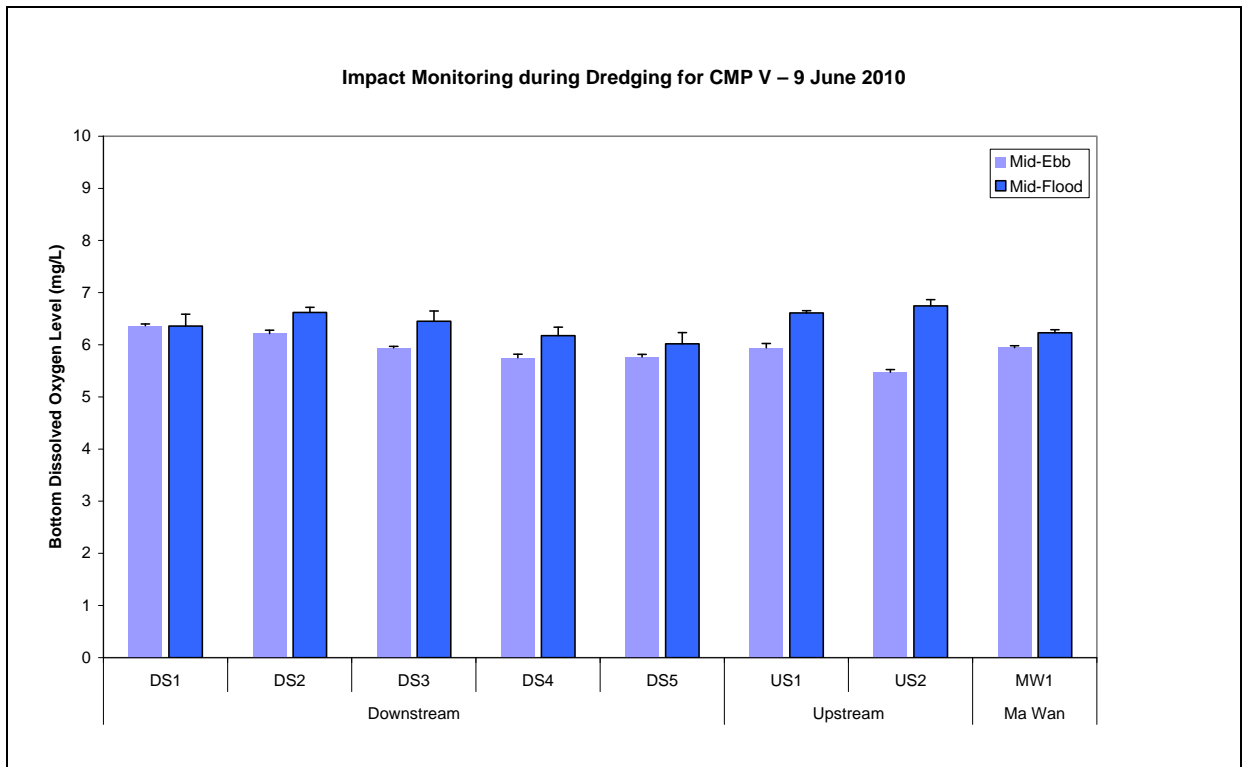


Figure 5: Bottom DO level (mean + SD) at Downstream (DS1, DS2, DS3, DS4 and DS5), Upstream (US1 and US2) and Ma Wan (MW1) stations during Impact Monitoring for Dredging at CMP V on 9 June 2010.

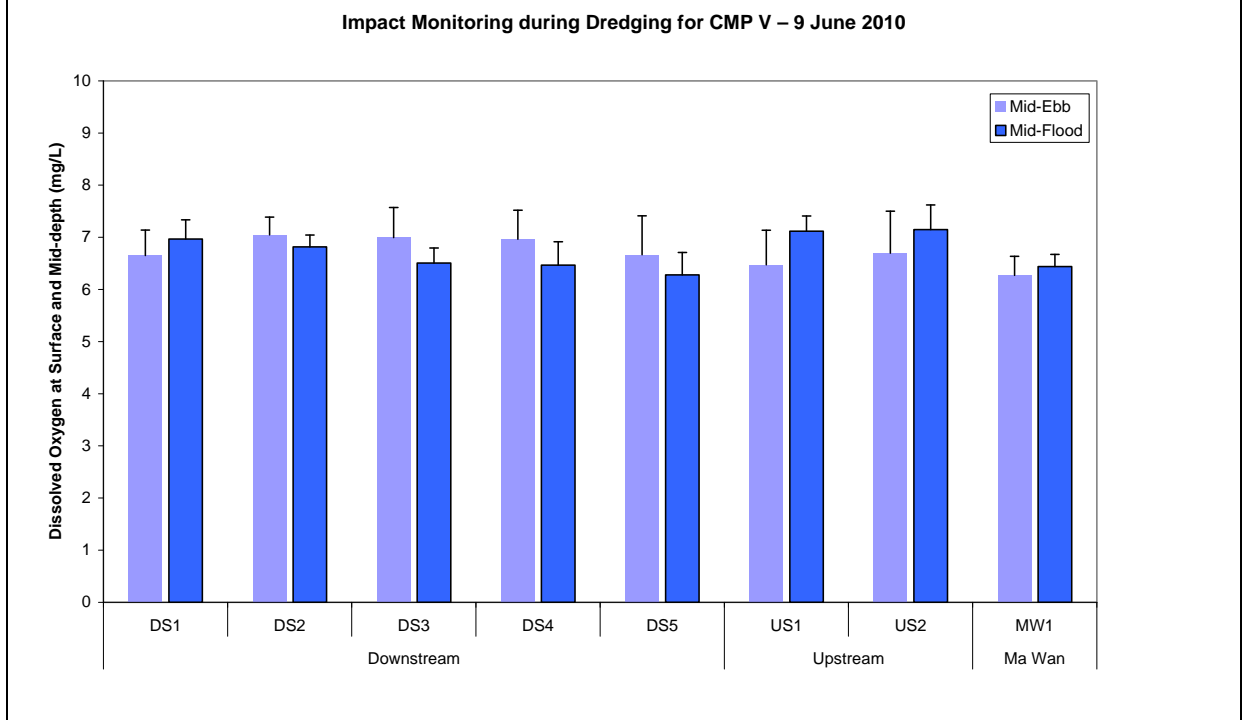


Figure 6: DO level at Surface and Mid-depth (mean + SD) at Downstream (DS1, DS2, DS3, DS4 and DS5), Upstream (US1 and US2) and Ma Wan (MW1) stations during Impact Monitoring for Dredging at CMP V on 9 June 2010.

Impact Monitoring during Dredging for CMP V – 9 June 2010

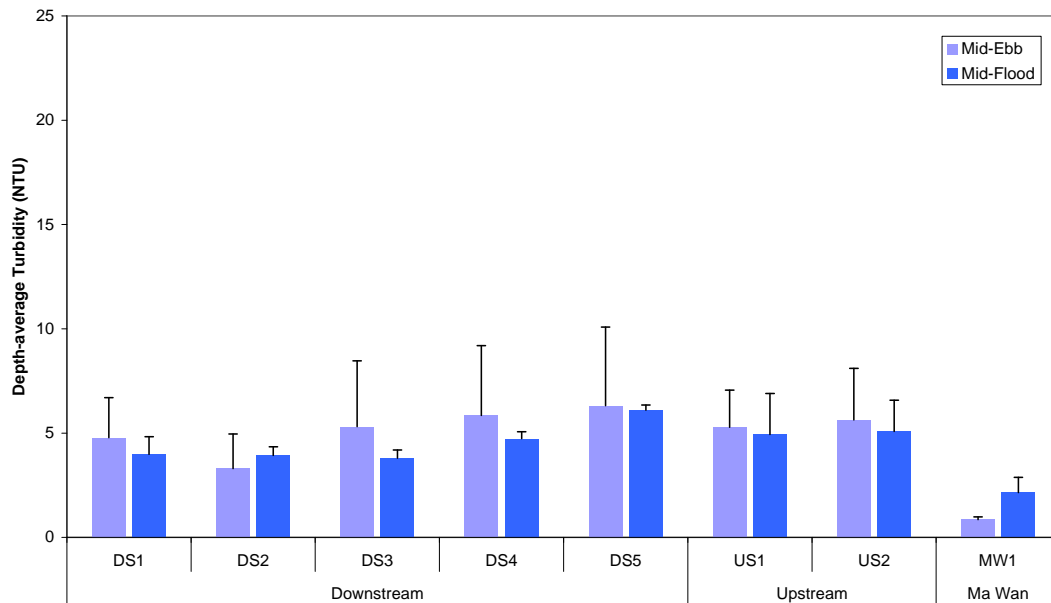


Figure 7: Depth-average Turbidity (mean + SD) at Downstream (DS1, DS2, DS3, DS4 and DS5), Upstream (US1 and US2) and Ma Wan (MW1) stations during Impact Monitoring for Dredging at CMP V on 9 June 2010.

Impact Monitoring during Dredging for CMP V – 9 June 2010

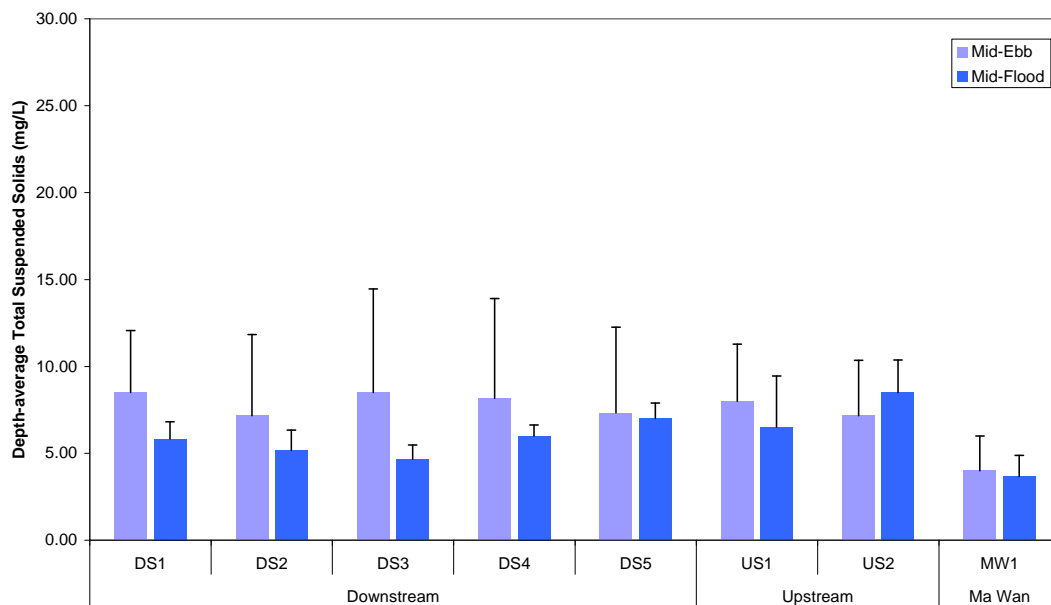


Figure 8: Depth-average TSS (mean + SD) at Downstream (DS1, DS2, DS3, DS4 and DS5), Upstream (US1 and US2) and Ma Wan (MW1) stations during Impact Monitoring for Dredging at CMP V on 9 June 2010.

Impact Monitoring during Dredging for CMP V – 12 June 2010

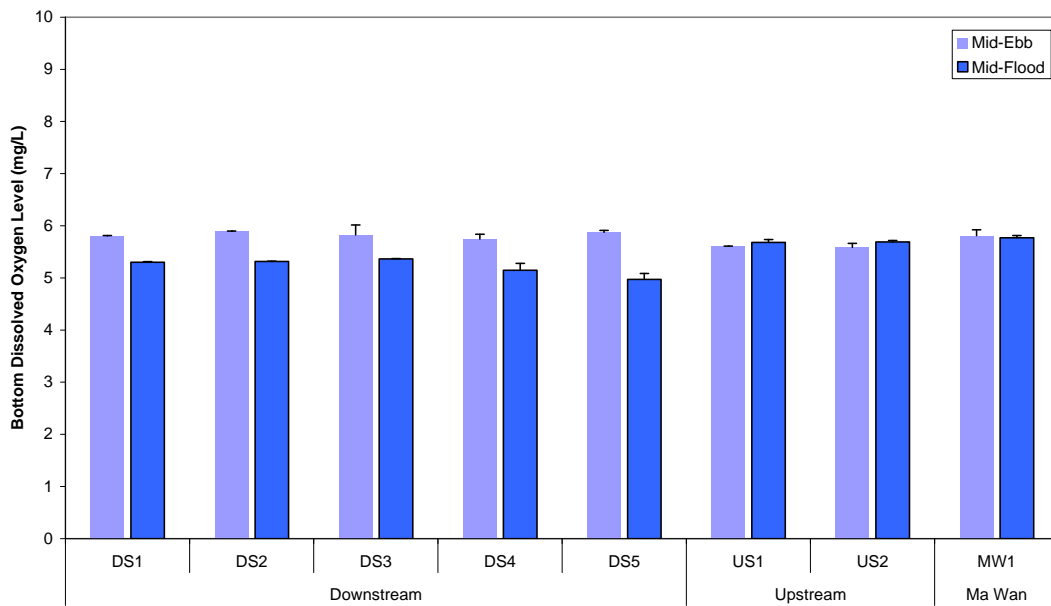


Figure 9: Bottom DO level (mean + SD) at Downstream (DS1, DS2, DS3, DS4 and DS5), Upstream (US1 and US2) and Ma Wan (MW1) stations during Impact Monitoring for Dredging at CMP V on 12 June 2010.

Impact Monitoring during Dredging for CMP V – 12 June 2010

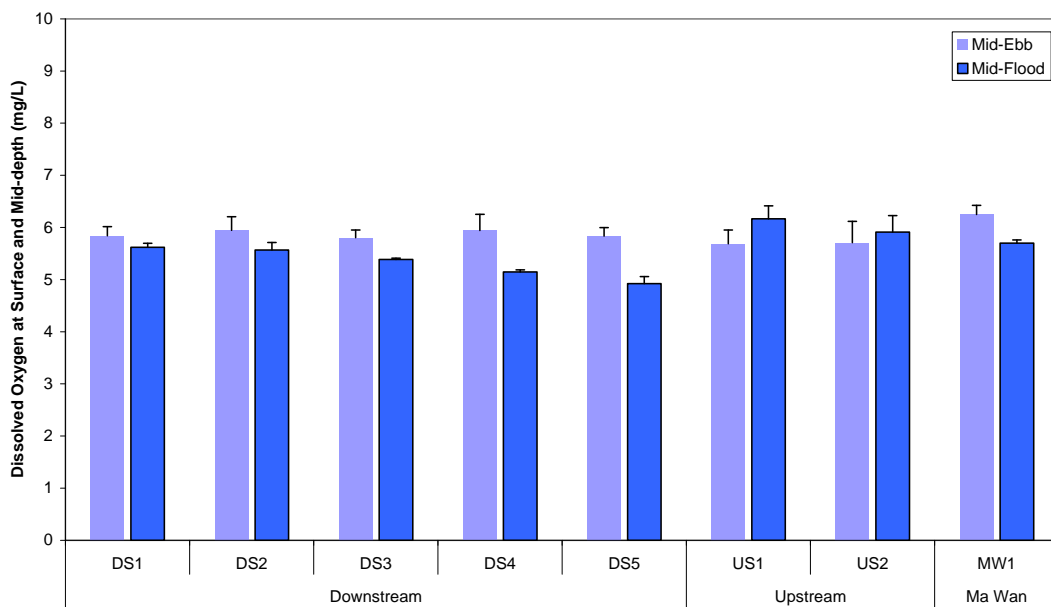


Figure 10: DO level at Surface and Mid-depth (mean + SD) at Downstream (DS1, DS2, DS3, DS4 and DS5), Upstream (US1 and US2) and Ma Wan (MW1) stations during Impact Monitoring for Dredging at CMP V on 12 June 2010.

Impact Monitoring during Dredging for CMP V – 12 June 2010

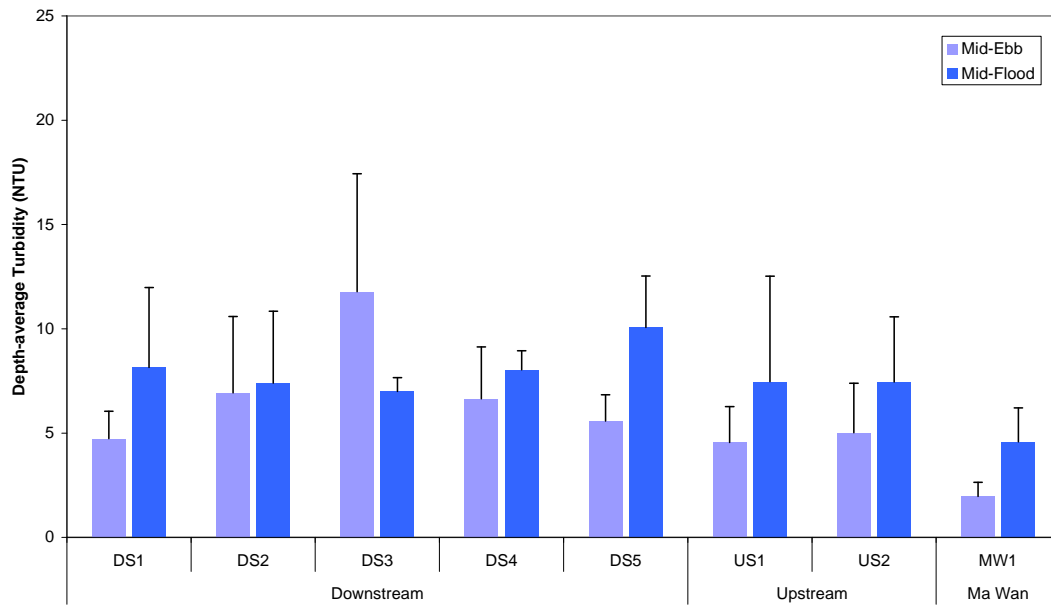


Figure 11: Depth-average Turbidity (mean + SD) at Downstream (DS1, DS2, DS3, DS4 and DS5), Upstream (US1 and US2) and Ma Wan (MW1) stations during Impact Monitoring for Dredging at CMP V on 12 June 2010.

Impact Monitoring during Dredging for CMP V – 12 June 2010

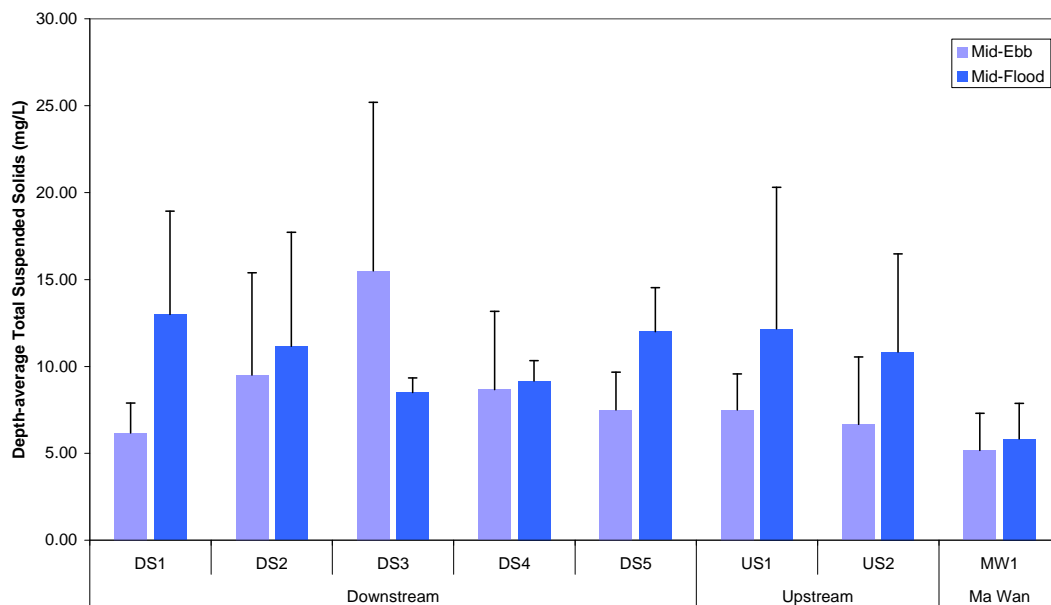


Figure 12: Depth-average TSS (mean + SD) at Downstream (DS1, DS2, DS3, DS4 and DS5), Upstream (US1 and US2) and Ma Wan (MW1) stations during Impact Monitoring for Dredging at CMP V on 12 June 2010.

Impact Monitoring during Dredging for CMP V – 17 June 2010

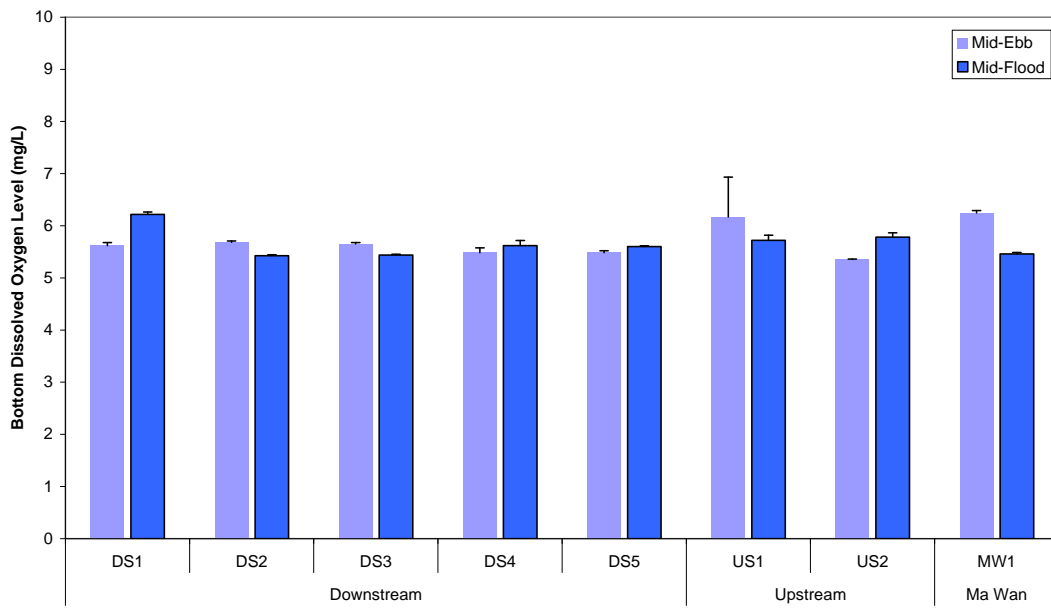


Figure 13: Bottom DO level (mean + SD) at Downstream (DS1, DS2, DS3, DS4 and DS5), Upstream (US1 and US2) and Ma Wan (MW1) stations during Impact Monitoring for Dredging at CMP V on 17 June 2010.

Impact Monitoring during Dredging for CMP V – 17 June 2010

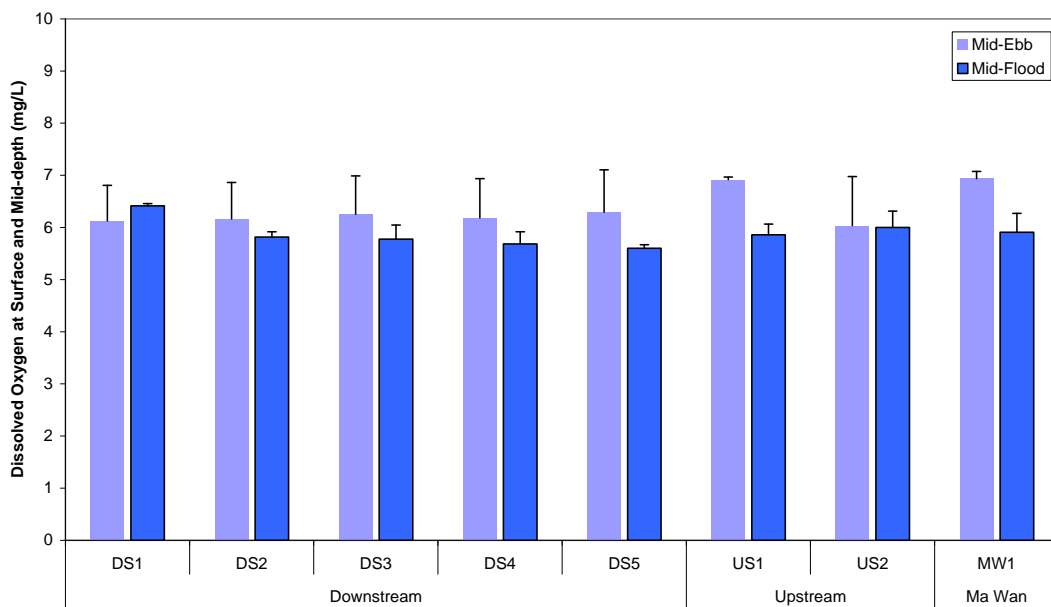


Figure 14: DO level at Surface and Mid-depth (mean + SD) at Downstream (DS1, DS2, DS3, DS4 and DS5), Upstream (US1 and US2) and Ma Wan (MW1) stations during Impact Monitoring for Dredging at CMP V on 17 June 2010.

Impact Monitoring during Dredging for CMP V – 17 June 2010

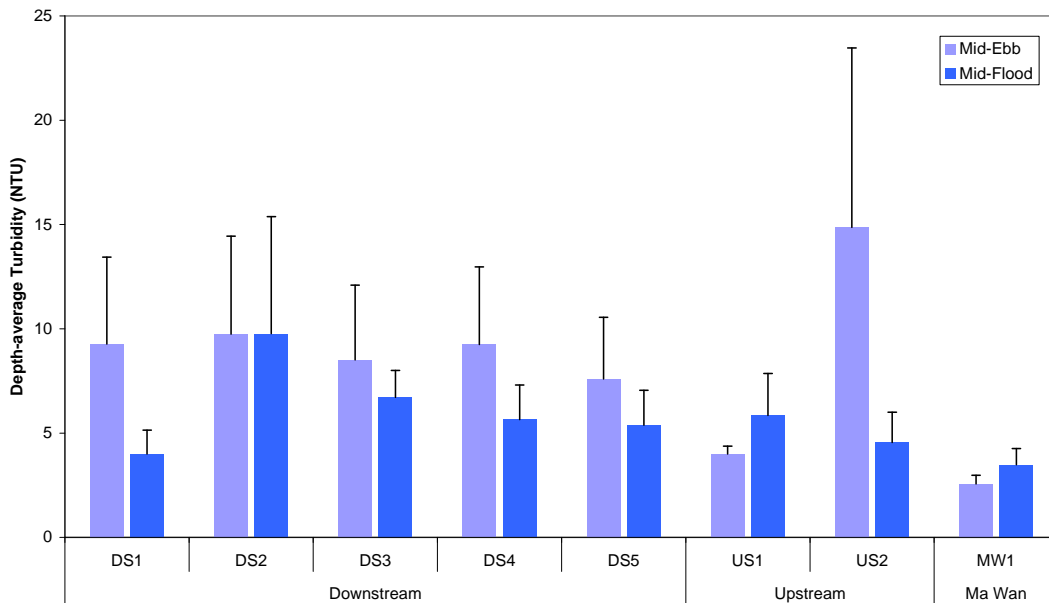


Figure 15: Depth-average Turbidity (mean + SD) at Downstream (DS1, DS2, DS3, DS4 and DS5), Upstream (US1 and US2) and Ma Wan (MW1) stations during Impact Monitoring for Dredging at CMP V on 17 June 2010.

Impact Monitoring during Dredging for CMP V – 17 June 2010

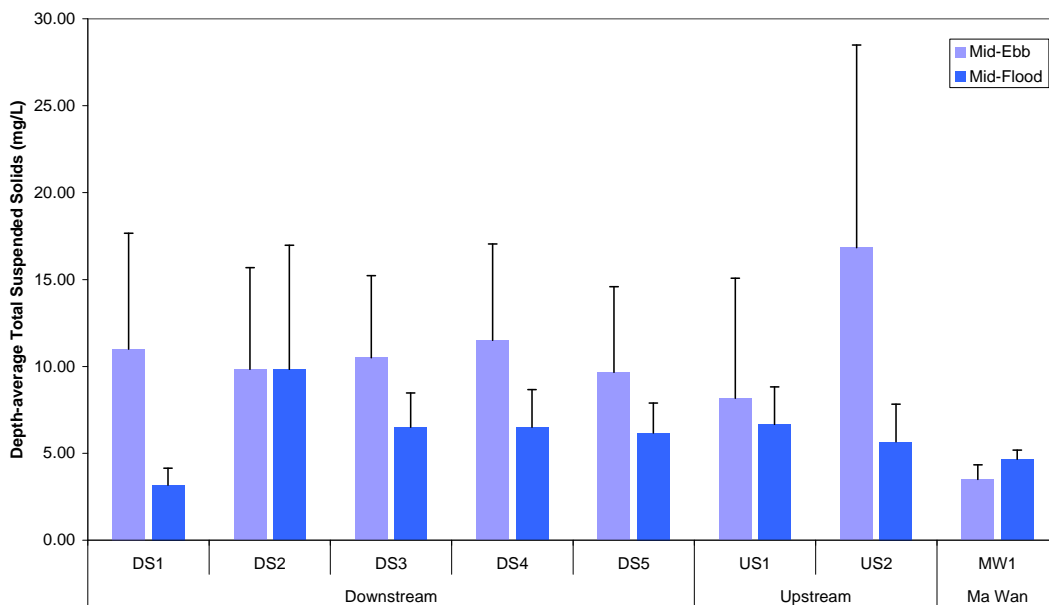


Figure 16: Depth-average TSS (mean + SD) at Downstream (DS1, DS2, DS3, DS4 and DS5), Upstream (US1 and US2) and Ma Wan (MW1) stations during Impact Monitoring for Dredging at CMP V on 17 June 2010.

Impact Monitoring during Dredging for CMP V – 19 June 2010

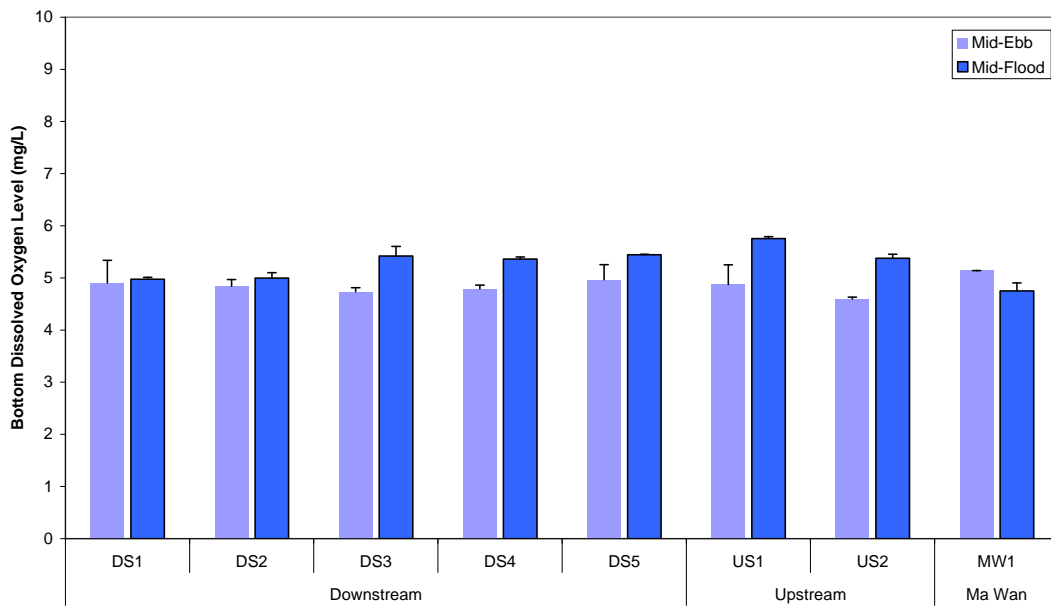


Figure 17: Bottom DO level (mean + SD) at Downstream (DS1, DS2, DS3, DS4 and DS5), Upstream (US1 and US2) and Ma Wan (MW1) stations during Impact Monitoring for Dredging at CMP V on 19 June 2010.

Impact Monitoring during Dredging for CMP V – 19 June 2010

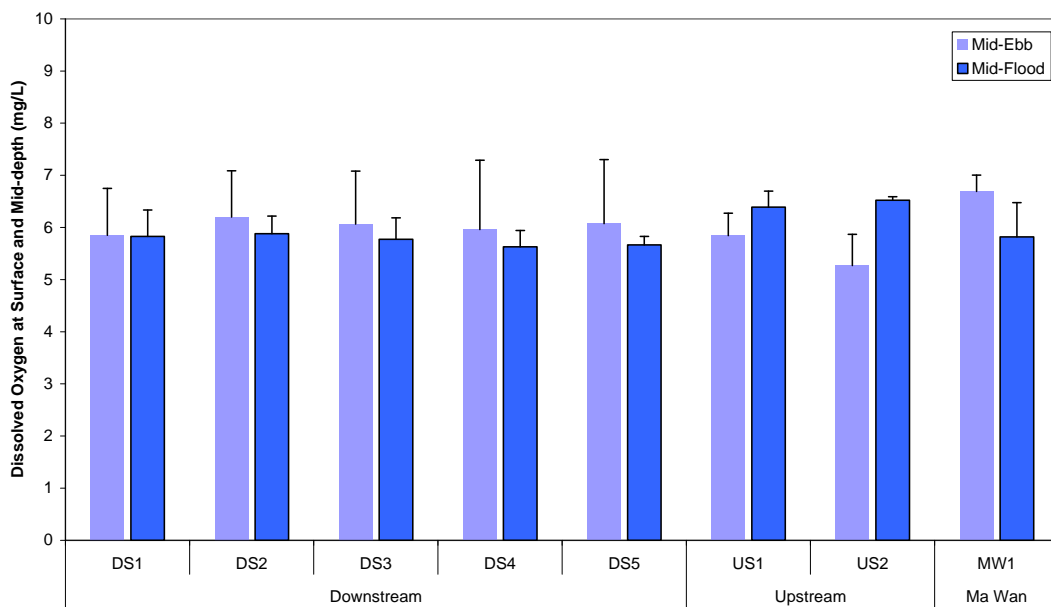


Figure 18: DO level at Surface and Mid-depth (mean + SD) at Downstream (DS1, DS2, DS3, DS4 and DS5), Upstream (US1 and US2) and Ma Wan (MW1) stations during Impact Monitoring for Dredging at CMP V on 19 June 2010.

Impact Monitoring during Dredging for CMP V – 19 June 2010

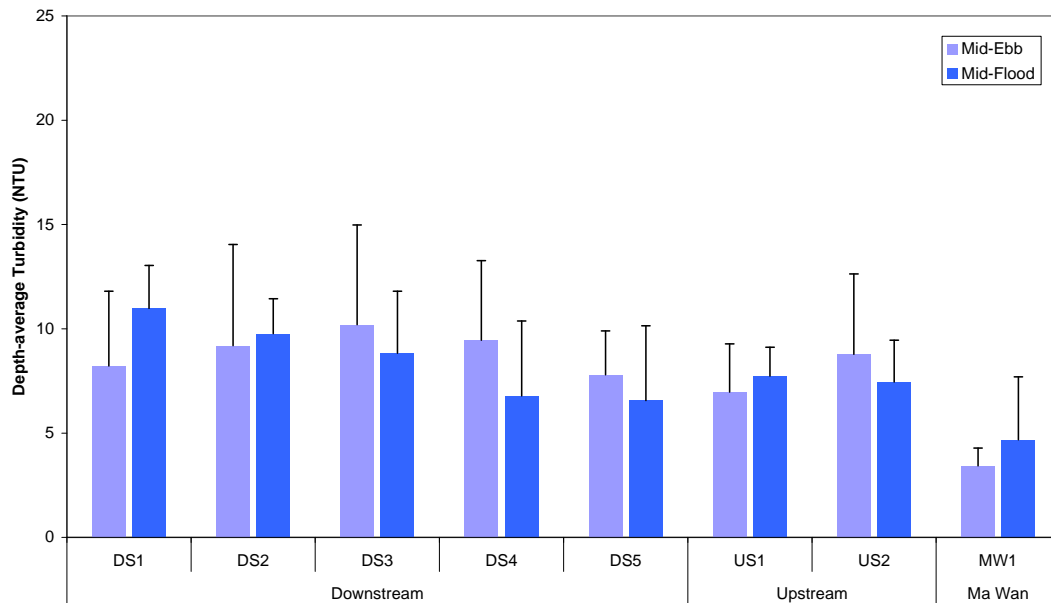


Figure 19: Depth-average Turbidity (mean + SD) at Downstream (DS1, DS2, DS3, DS4 and DS5), Upstream (US1 and US2) and Ma Wan (MW1) stations during Impact Monitoring for Dredging at CMP V on 19 June 2010.

Impact Monitoring during Dredging for CMP V – 19 June 2010

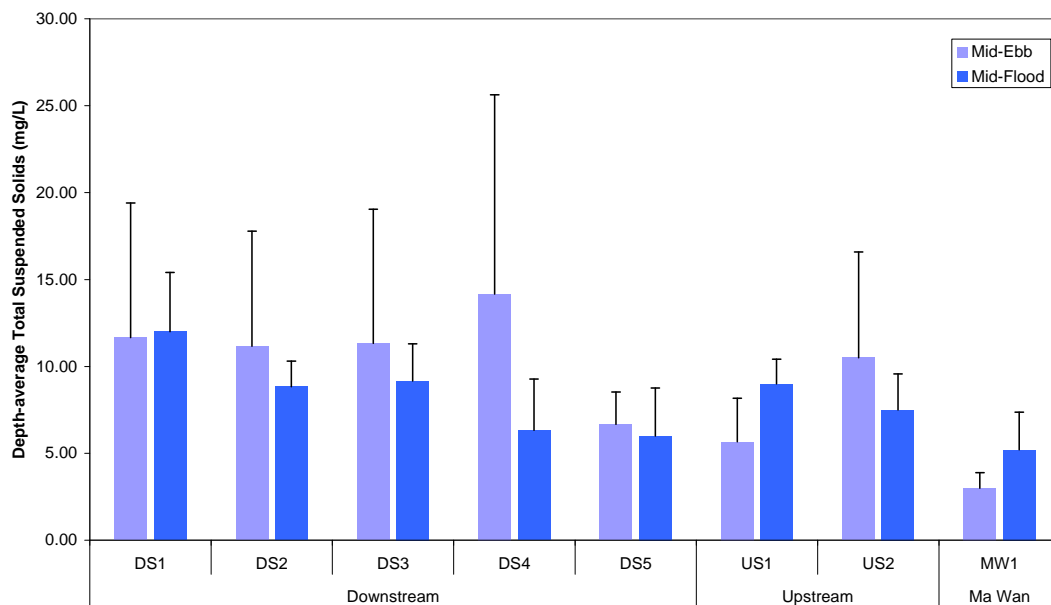


Figure 20: Depth-average TSS (mean + SD) at Downstream (DS1, DS2, DS3, DS4 and DS5), Upstream (US1 and US2) and Ma Wan (MW1) stations during Impact Monitoring for Dredging at CMP V on 19 June 2010.

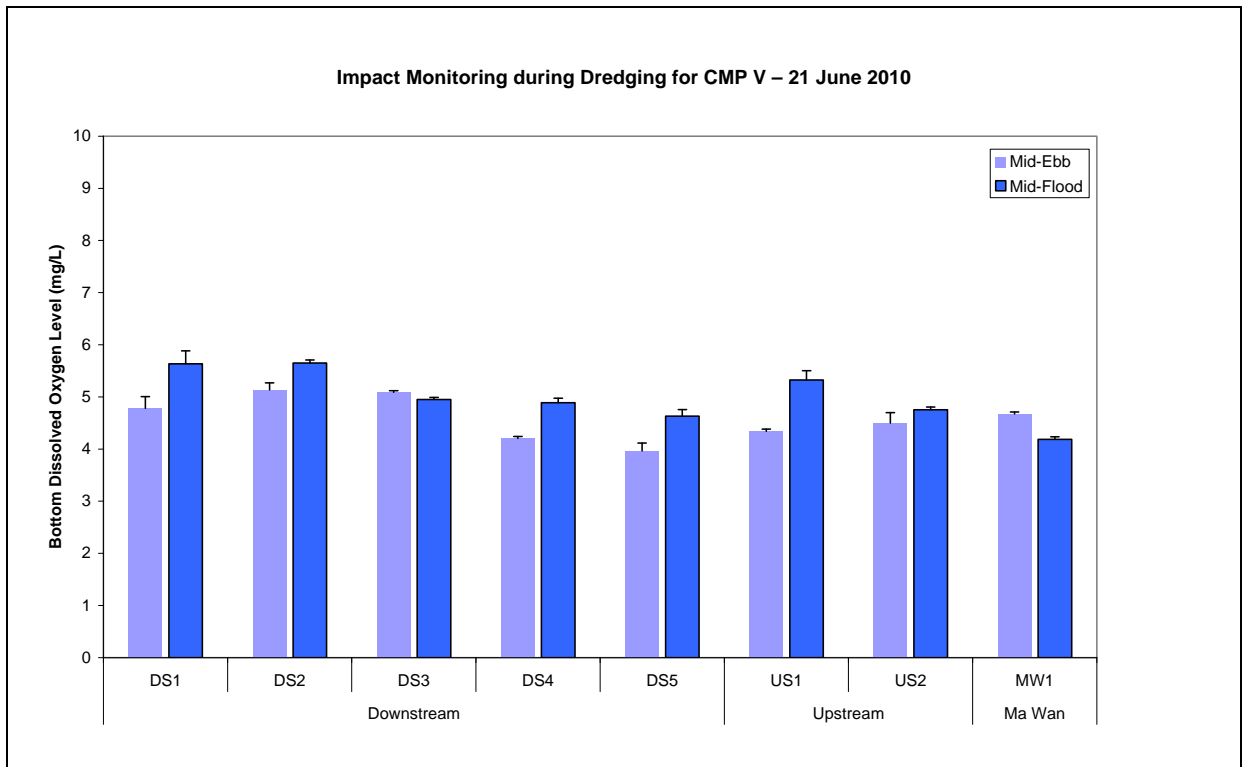


Figure 21: Bottom DO level (mean + SD) at Downstream (DS1, DS2, DS3, DS4 and DS5), Upstream (US1 and US2) and Ma Wan (MW1) stations during Impact Monitoring for Dredging at CMP V on 21 June 2010.

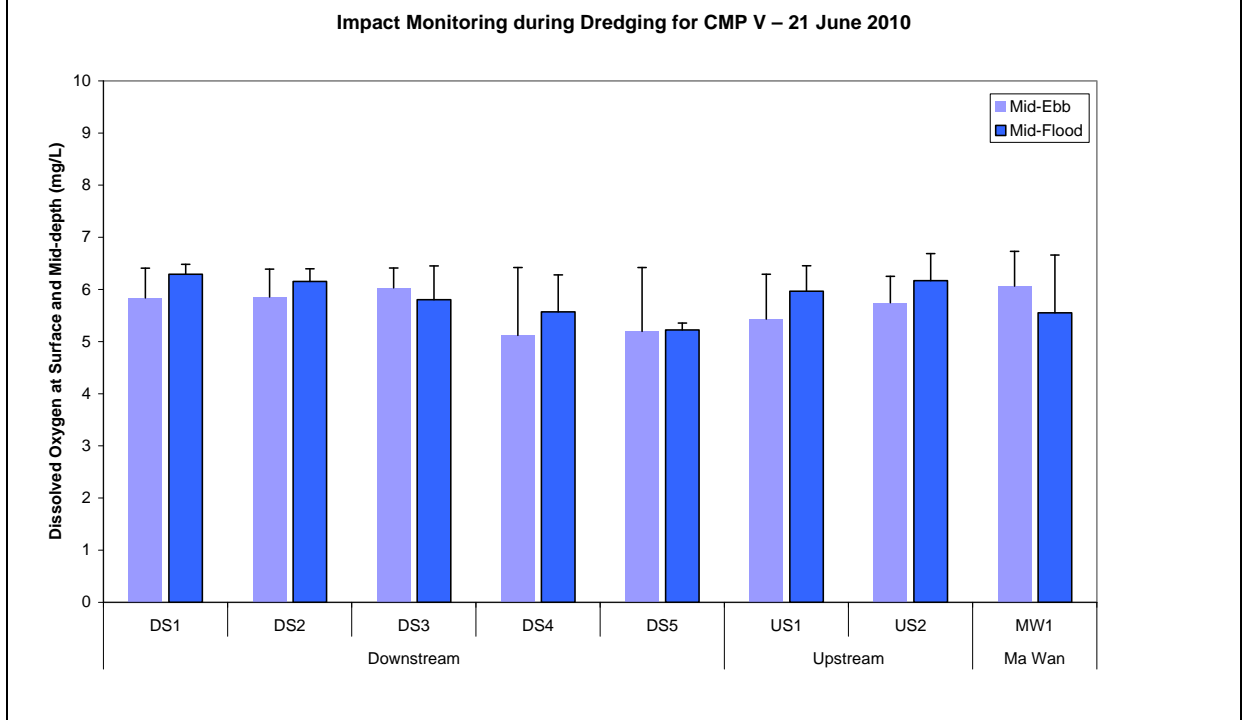


Figure 22: DO level at Surface and Mid-depth (mean + SD) at Downstream (DS1, DS2, DS3, DS4 and DS5), Upstream (US1 and US2) and Ma Wan (MW1) stations during Impact Monitoring for Dredging at CMP V on 21 June 2010.

Impact Monitoring during Dredging for CMP V – 21 June 2010

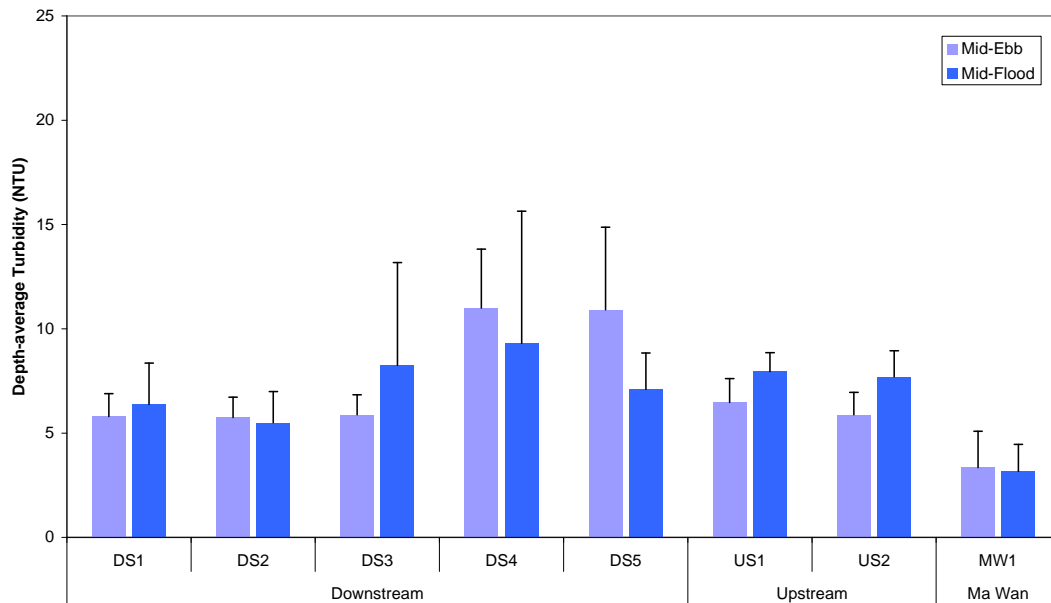


Figure 23: Depth-average Turbidity (mean + SD) at Downstream (DS1, DS2, DS3, DS4 and DS5), Upstream (US1 and US2) and Ma Wan (MW1) stations during Impact Monitoring for Dredging at CMP V on 21 June 2010.

Impact Monitoring during Dredging for CMP V – 21 June 2010

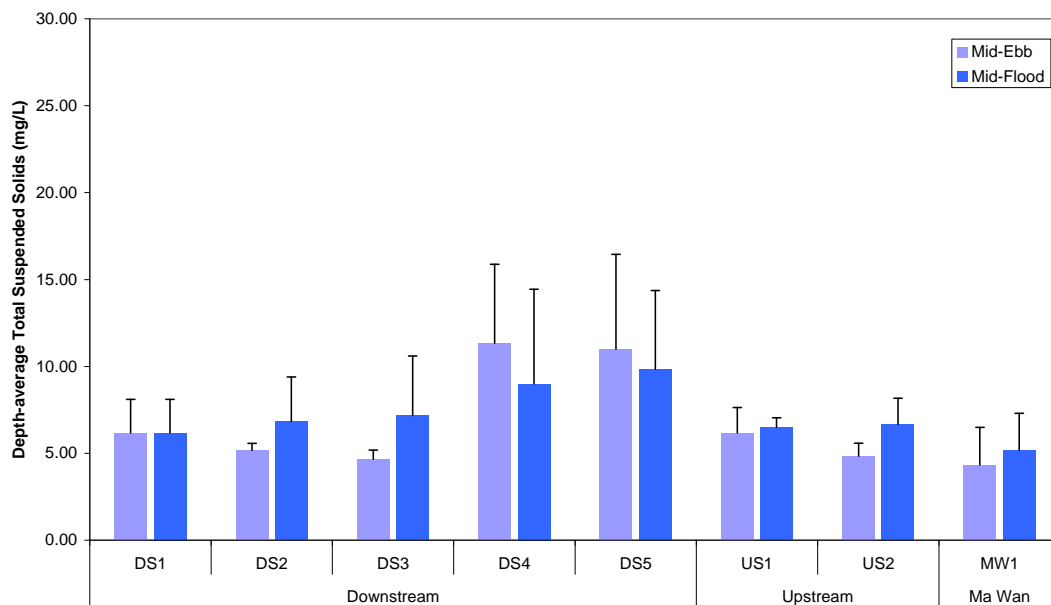


Figure 24: Depth-average TSS (mean + SD) at Downstream (DS1, DS2, DS3, DS4 and DS5), Upstream (US1 and US2) and Ma Wan (MW1) stations during Impact Monitoring for Dredging at CMP V on 21 June 2010.

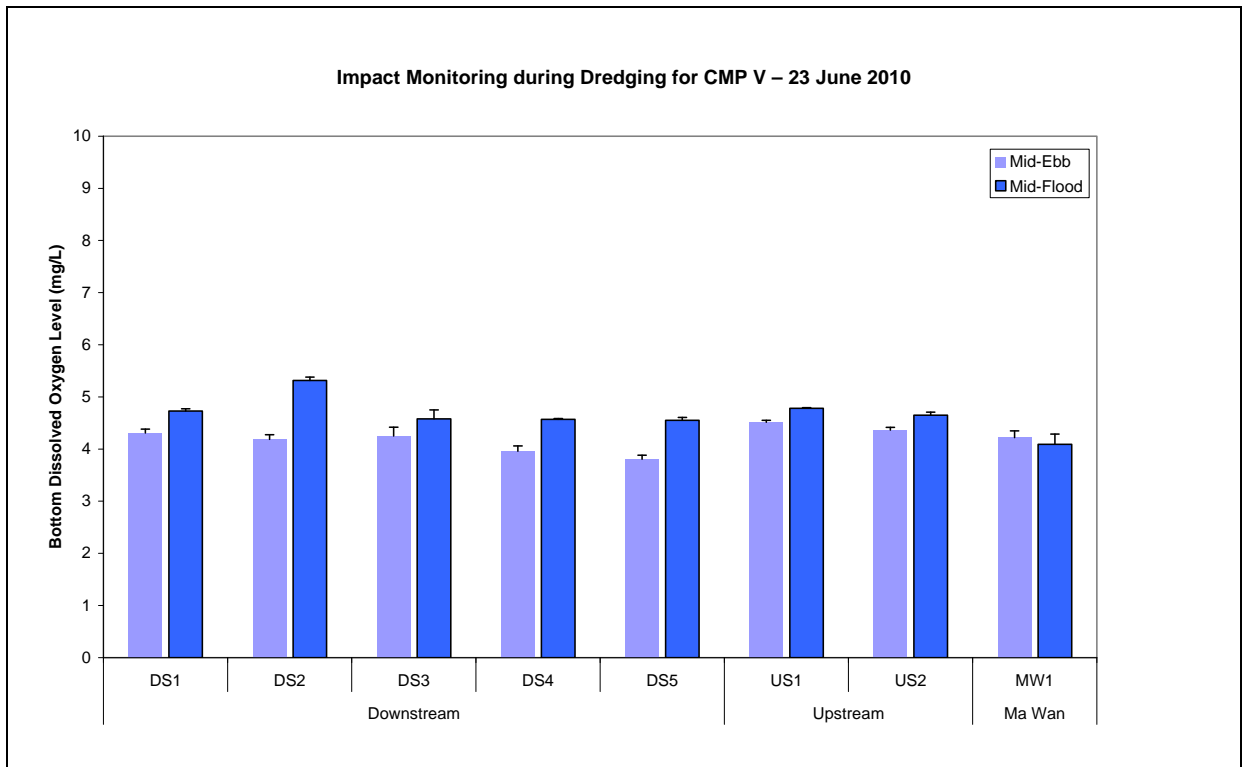


Figure 25: Bottom DO level (mean + SD) at Downstream (DS1, DS2, DS3, DS4 and DS5), Upstream (US1 and US2) and Ma Wan (MW1) stations during Impact Monitoring for Dredging at CMP V on 23 June 2010.

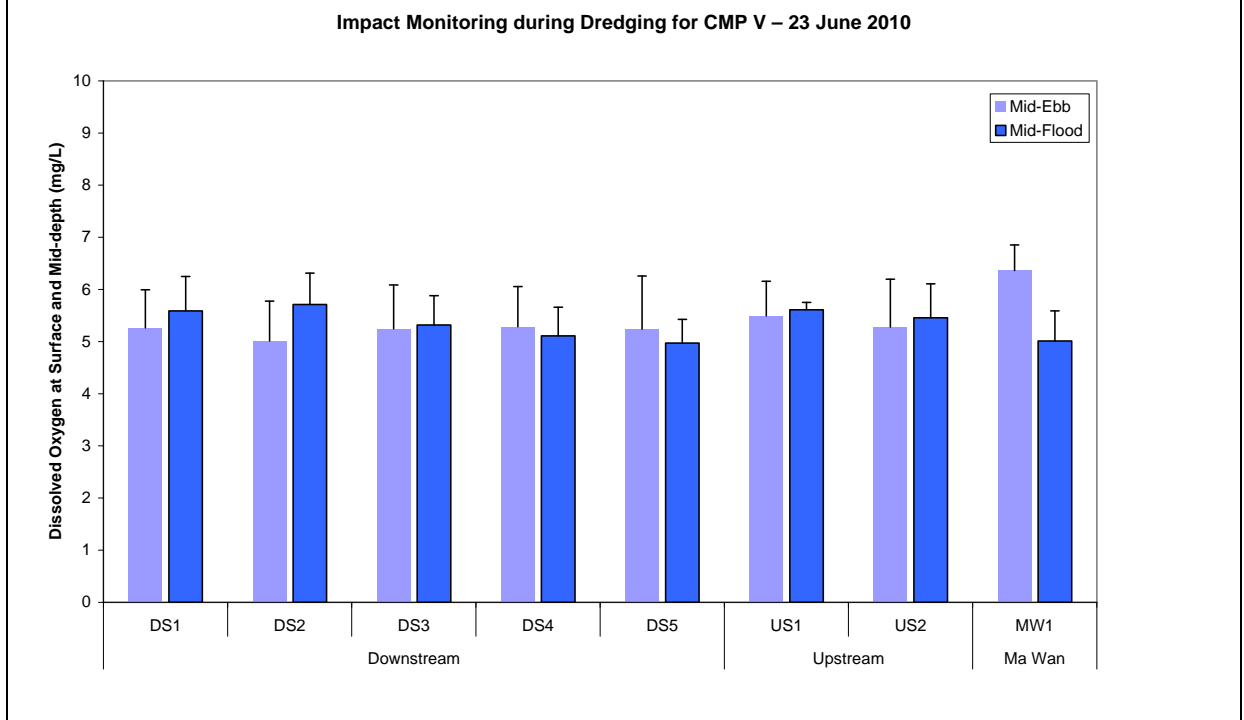


Figure 26: DO level at Surface and Mid-depth (mean + SD) at Downstream (DS1, DS2, DS3, DS4 and DS5), Upstream (US1 and US2) and Ma Wan (MW1) stations during Impact Monitoring for Dredging at CMP V on 23 June 2010.

Impact Monitoring during Dredging for CMP V – 23 June 2010

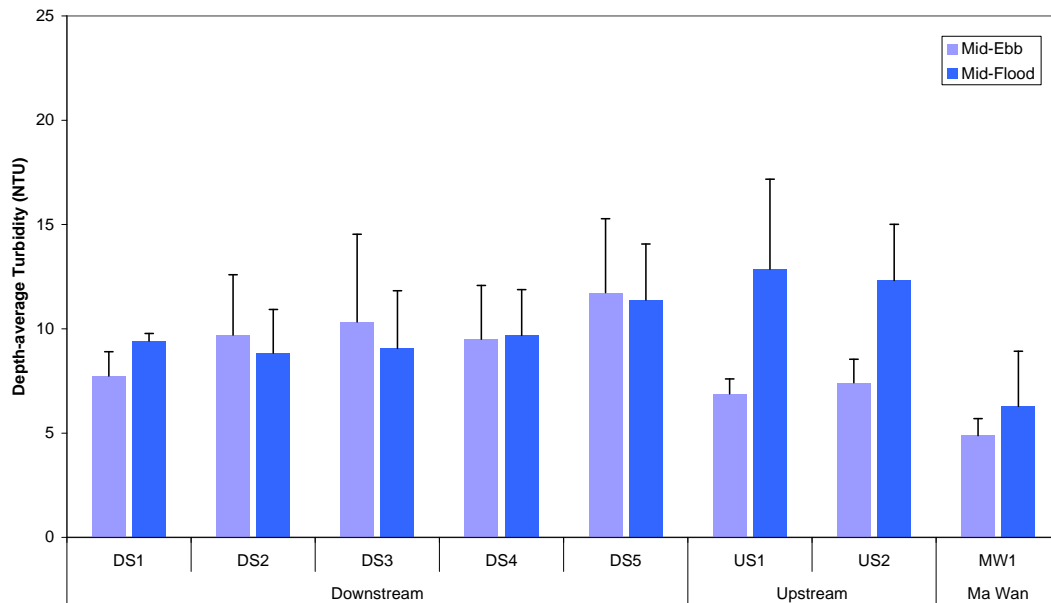


Figure 27: Depth-average Turbidity (mean + SD) at Downstream (DS1, DS2, DS3, DS4 and DS5), Upstream (US1 and US2) and Ma Wan (MW1) stations during Impact Monitoring for Dredging at CMP V on 23 June 2010.

Impact Monitoring during Dredging for CMP V – 23 June 2010

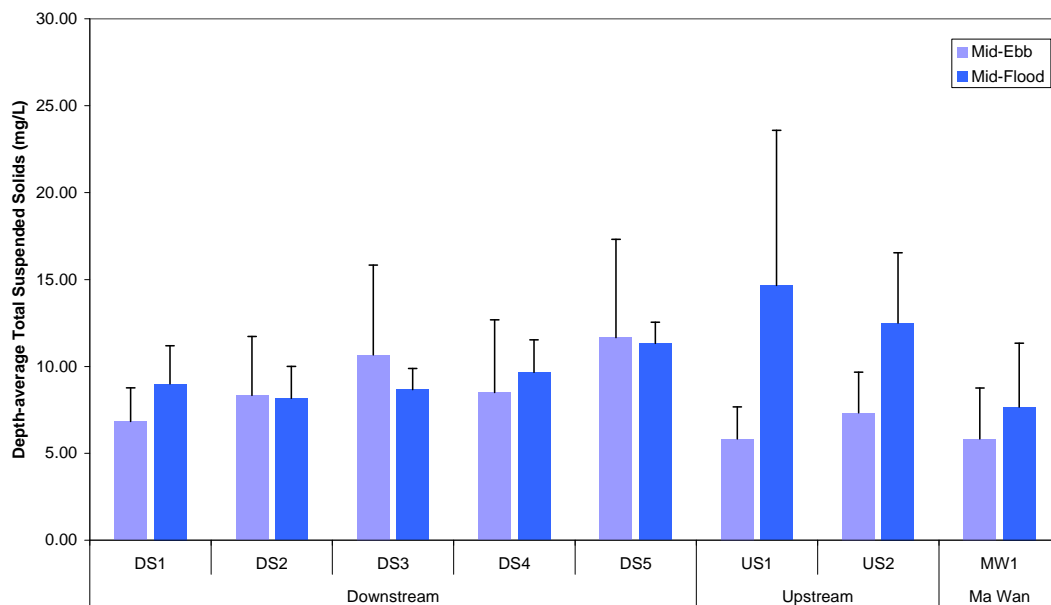


Figure 28: Depth-average TSS (mean + SD) at Downstream (DS1, DS2, DS3, DS4 and DS5), Upstream (US1 and US2) and Ma Wan (MW1) stations during Impact Monitoring for Dredging at CMP V on 23 June 2010.

Impact Monitoring during Dredging for CMP V – 25 June 2010

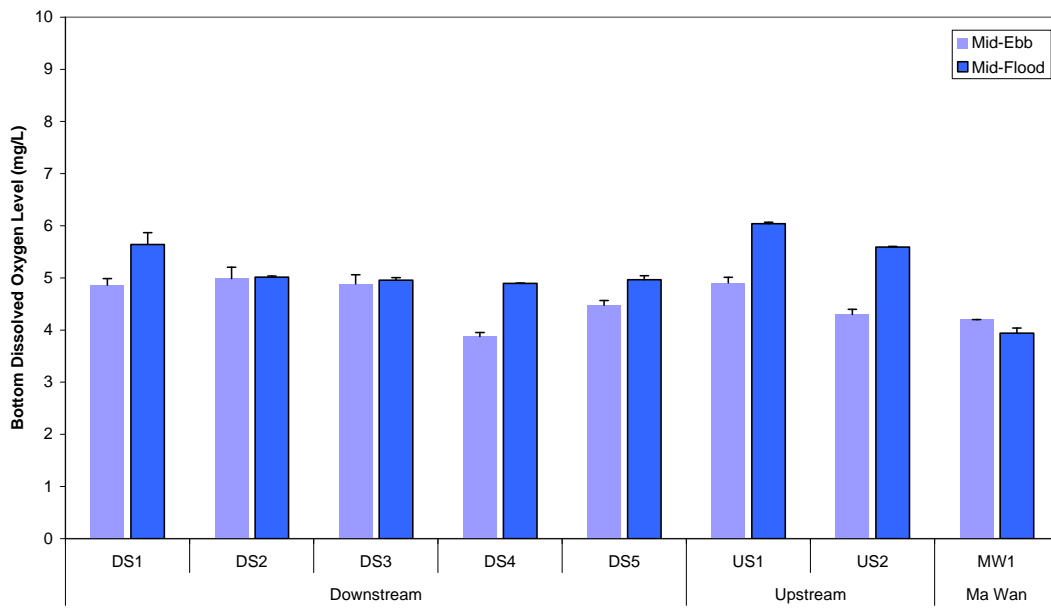


Figure 29: Bottom DO level (mean + SD) at Downstream (DS1, DS2, DS3, DS4 and DS5), Upstream (US1 and US2) and Ma Wan (MW1) stations during Impact Monitoring for Dredging at CMP V on 25 June 2010.

Impact Monitoring during Dredging for CMP V – 25 June 2010

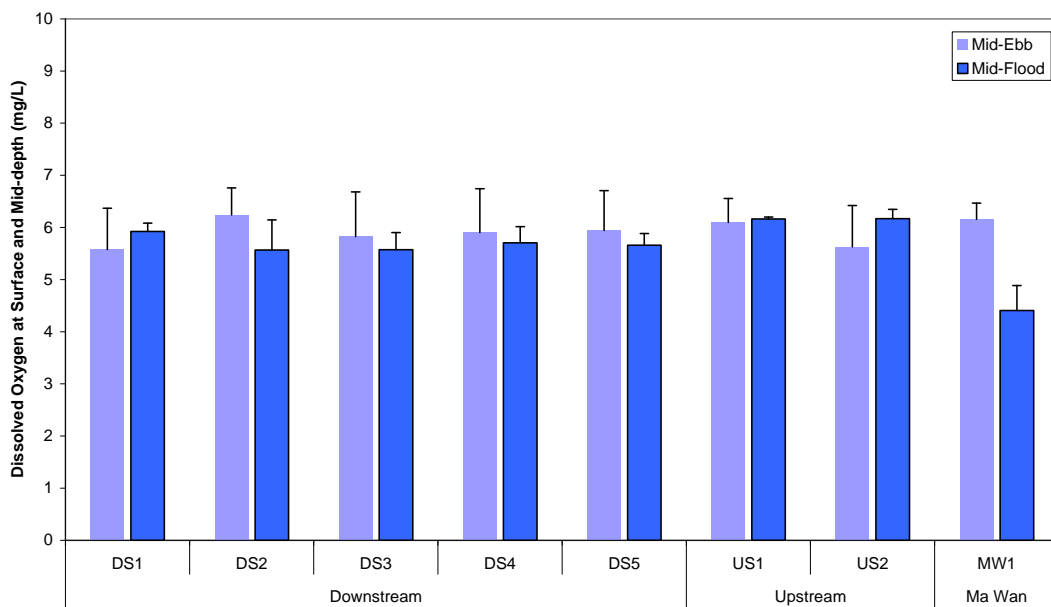


Figure 30: DO level at Surface and Mid-depth (mean + SD) at Downstream (DS1, DS2, DS3, DS4 and DS5), Upstream (US1 and US2) and Ma Wan (MW1) stations during Impact Monitoring for Dredging at CMP V on 25 June 2010.

Impact Monitoring during Dredging for CMP V – 25 June 2010

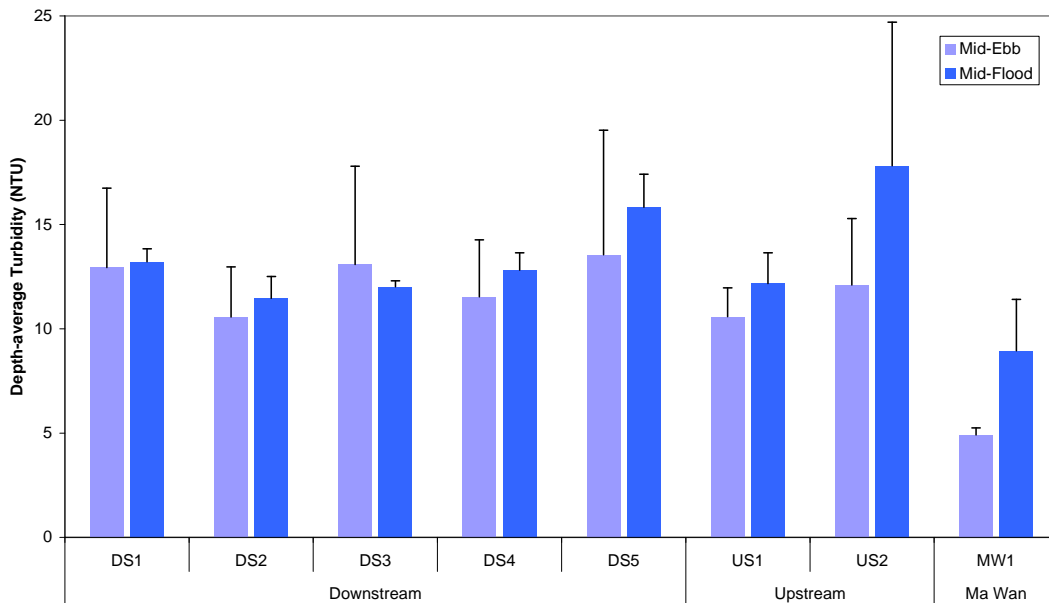


Figure 31: Depth-average Turbidity (mean + SD) at Downstream (DS1, DS2, DS3, DS4 and DS5), Upstream (US1 and US2) and Ma Wan (MW1) stations during Impact Monitoring for Dredging at CMP V on 25 June 2010.

Impact Monitoring during Dredging for CMP V – 25 June 2010

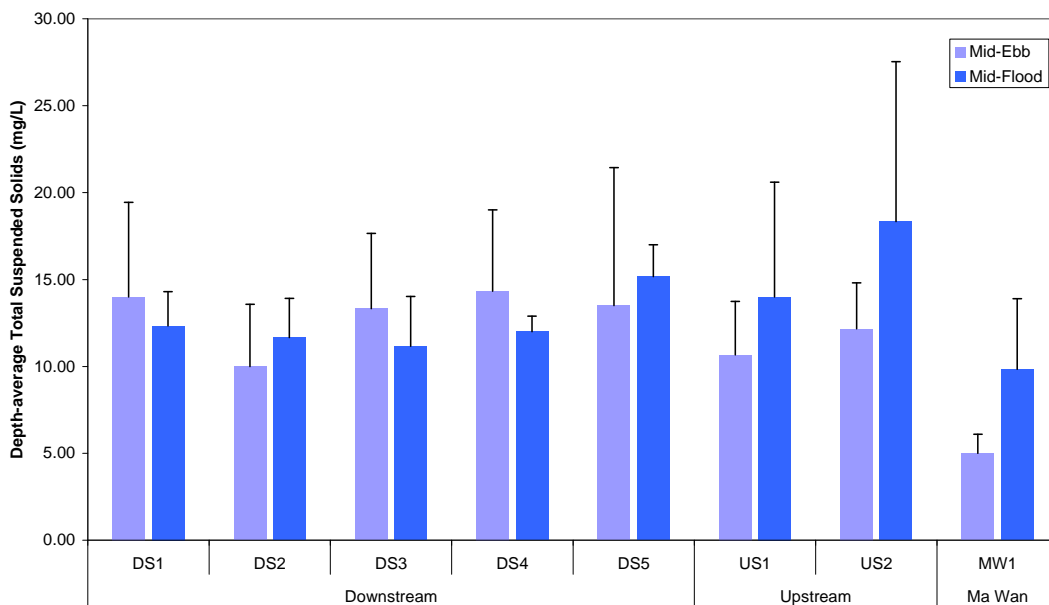


Figure 32: Depth-average TSS (mean + SD) at Downstream (DS1, DS2, DS3, DS4 and DS5), Upstream (US1 and US2) and Ma Wan (MW1) stations during Impact Monitoring for Dredging at CMP V on 25 June 2010.

Impact Monitoring during Dredging for CMP V – 28 June 2010

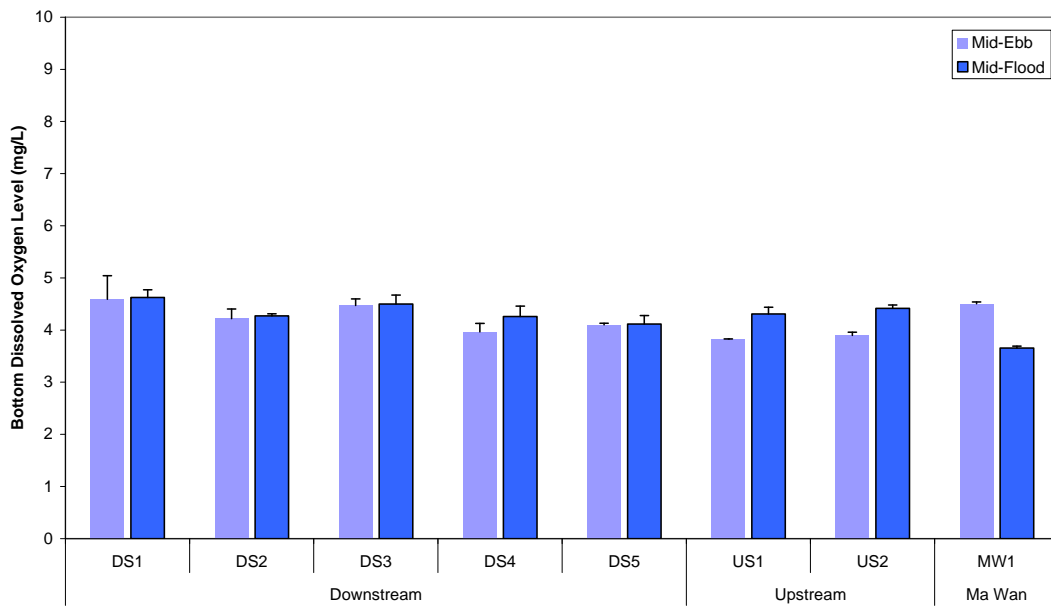


Figure 33: Bottom DO level (mean + SD) at Downstream (DS1, DS2, DS3, DS4 and DS5), Upstream (US1 and US2) and Ma Wan (MW1) stations during Impact Monitoring for Dredging at CMP V on 28 June 2010.

Impact Monitoring during Dredging for CMP V – 28 June 2010

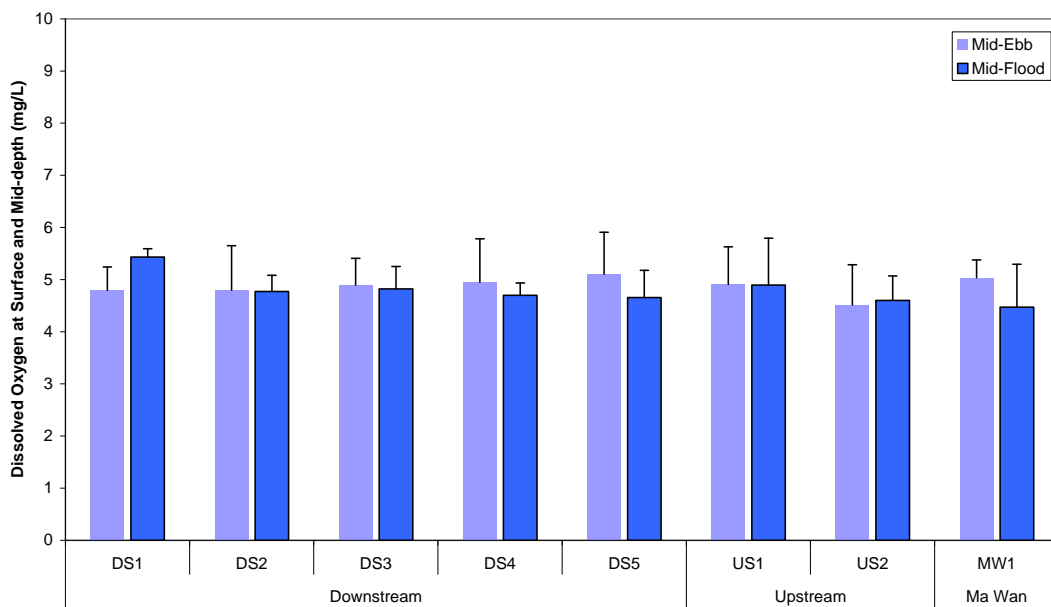


Figure 34: DO level at Surface and Mid-depth (mean + SD) at Downstream (DS1, DS2, DS3, DS4 and DS5), Upstream (US1 and US2) and Ma Wan (MW1) stations during Impact Monitoring for Dredging at CMP V on 28 June 2010.

Impact Monitoring during Dredging for CMP V – 28 June 2010

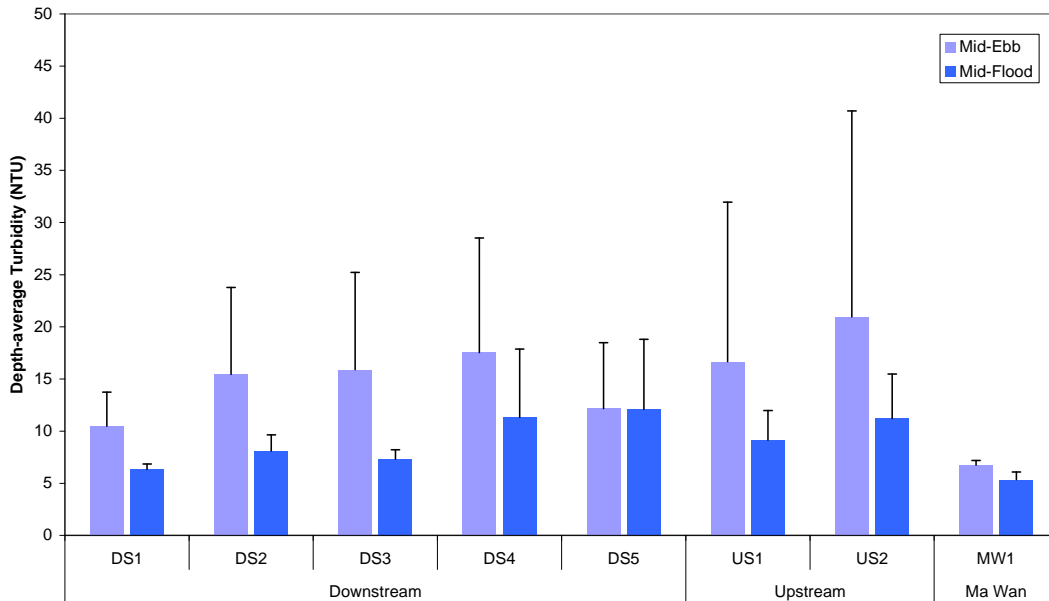


Figure 35: Depth-average Turbidity (mean + SD) at Downstream (DS1, DS2, DS3, DS4 and DS5), Upstream (US1 and US2) and Ma Wan (MW1) stations during Impact Monitoring for Dredging at CMP V on 28 June 2010.

Impact Monitoring during Dredging for CMP V – 28 June 2010

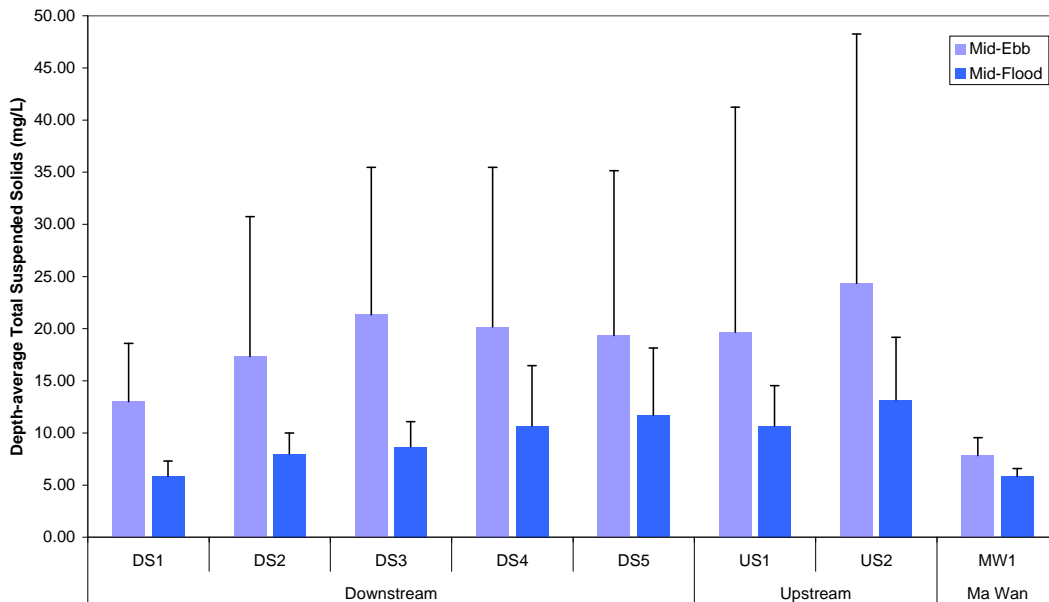


Figure 36: Depth-average TSS (mean + SD) at Downstream (DS1, DS2, DS3, DS4 and DS5), Upstream (US1 and US2) and Ma Wan (MW1) stations during Impact Monitoring for Dredging at CMP V on 28 June 2010.

Impact Monitoring during Dredging for CMP V – 30 June 2010

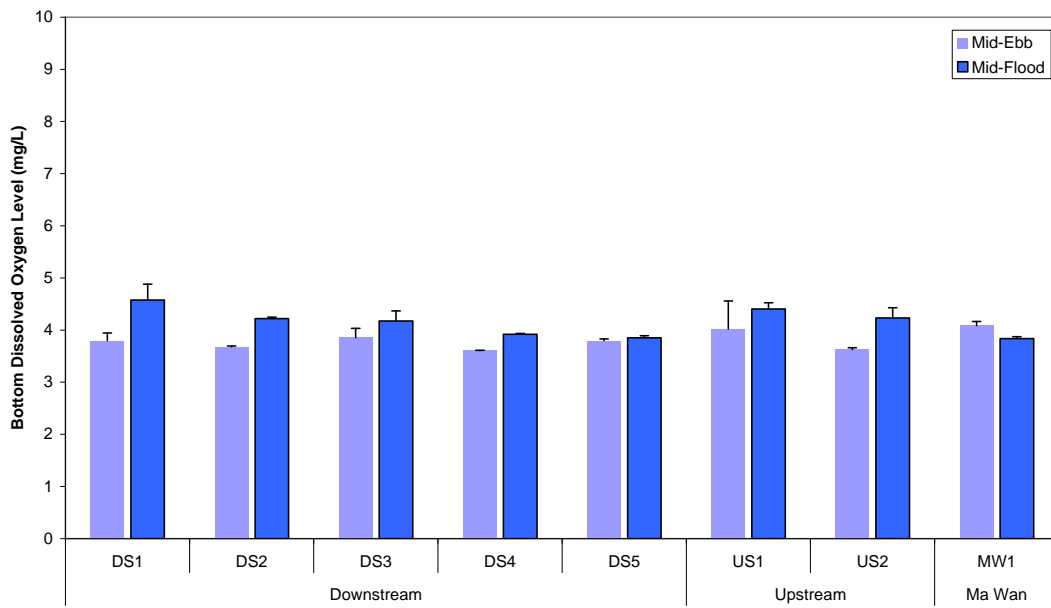


Figure 37: Bottom DO level (mean + SD) at Downstream (DS1, DS2, DS3, DS4 and DS5), Upstream (US1 and US2) and Ma Wan (MW1) stations during Impact Monitoring for Dredging at CMP V on 30 June 2010.

Impact Monitoring during Dredging for CMP V – 30 June 2010

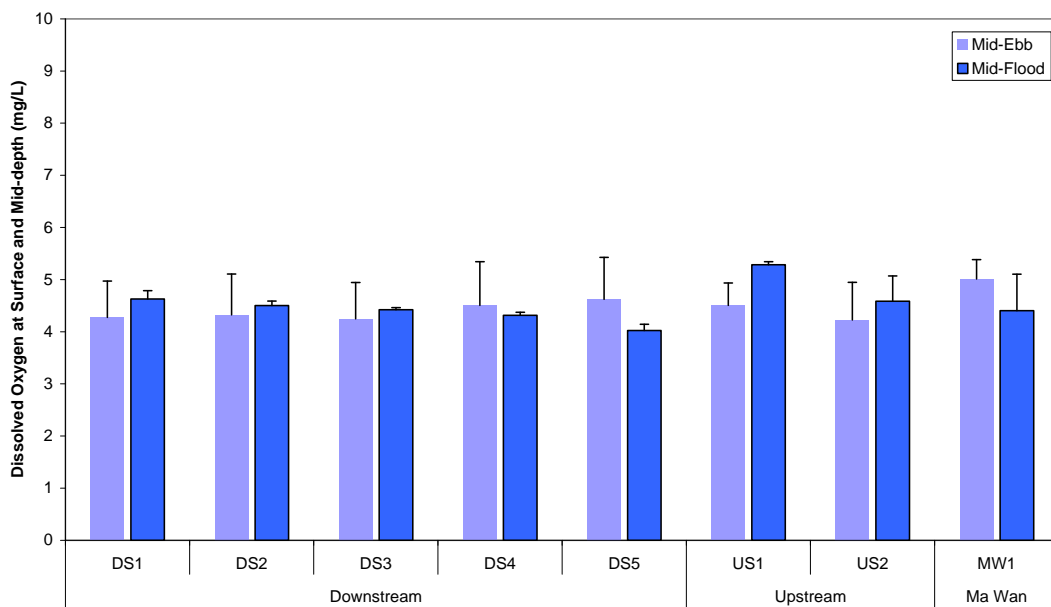


Figure 38: DO level at Surface and Mid-depth (mean + SD) at Downstream (DS1, DS2, DS3, DS4 and DS5), Upstream (US1 and US2) and Ma Wan (MW1) stations during Impact Monitoring for Dredging at CMP V on 30 June 2010.

Impact Monitoring during Dredging for CMP V – 30 June 2010

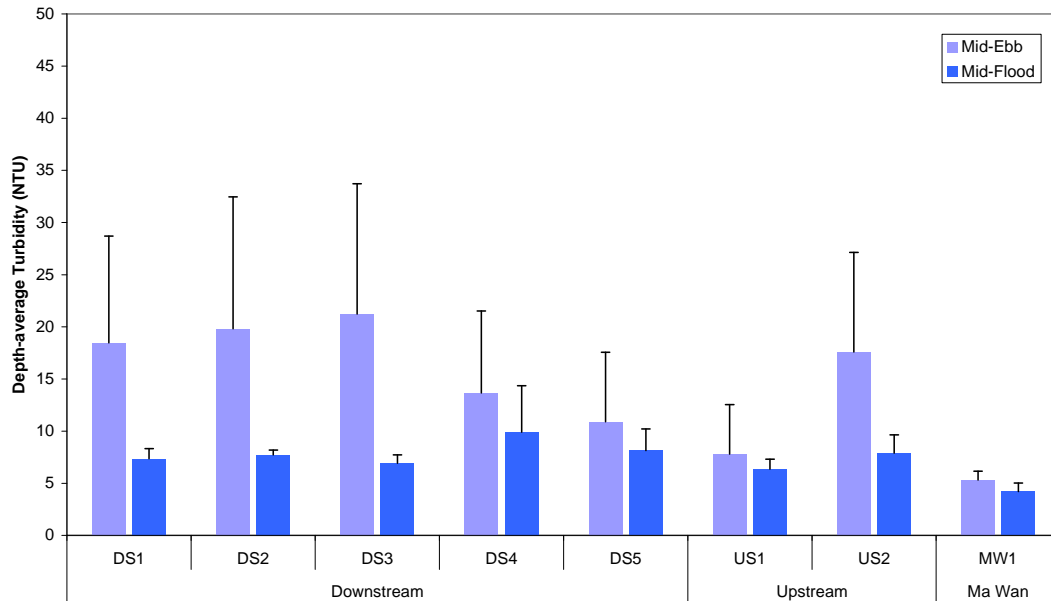


Figure 39: Depth-average Turbidity (mean + SD) at Downstream (DS1, DS2, DS3, DS4 and DS5), Upstream (US1 and US2) and Ma Wan (MW1) stations during Impact Monitoring for Dredging at CMP V on 30 June 2010.

Impact Monitoring during Dredging for CMP V – 30 June 2010

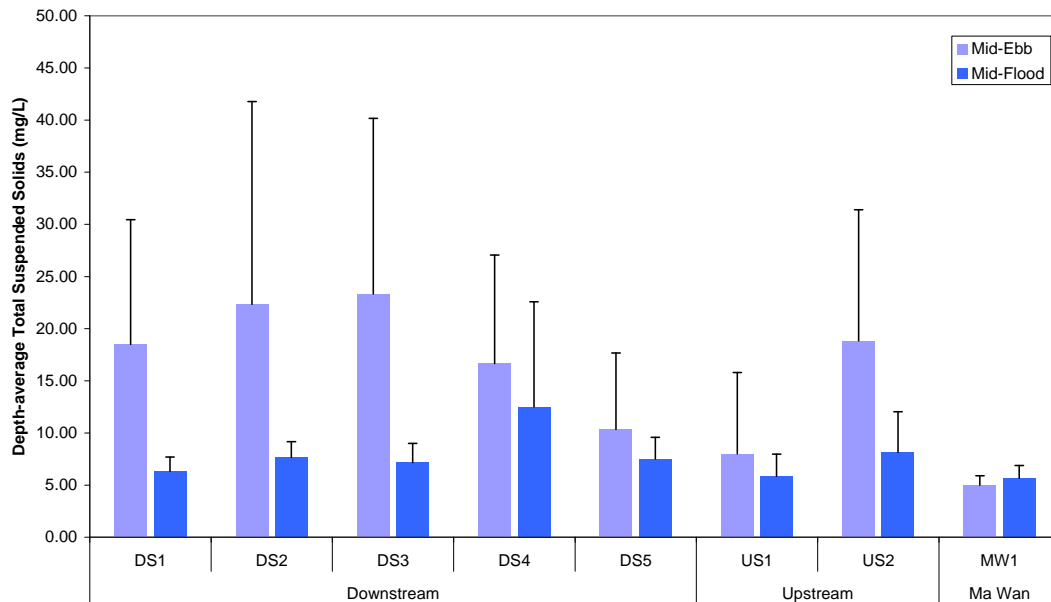


Figure 40: Depth-average TSS (mean + SD) at Downstream (DS1, DS2, DS3, DS4 and DS5), Upstream (US1 and US2) and Ma Wan (MW1) stations during Impact Monitoring for Dredging at CMP V on 30 June 2010.

Source: H:\Team\EM\GMS Projects\0103262 CEDD EM&A for CMP at Sha Chau (2009 - 2013)\06 Contractor Submission (LAM)\06.2 Impact Monitoring during Dredging\June 2010

Date: 22/07/2010

**Environmental
Resources
Management**



Table B1: Impact Water Quality Monitoring for Dredging Activities during Mid-ebb Tide for 9 June 2010

| Station | Downstream (Impact) | | |
|----------------------|-------------------------------|--------------------|--------|
| Time (hh:mm) | 09:34-12:23 | | |
| Monitoring Depth (m) | Depth Average | Surface and Middle | Bottom |
| D.O. (mg/L) | N/A | 6.86 | 6.01 |
| Turbidity (NTU) | 5.11 | N/A | N/A |
| SS (mg/L) | 7.93 | N/A | N/A |
| Remarks | Dredging works were observed. | | |

| Station | Upstream (Reference) | | |
|----------------------|-------------------------------|--------------------|--------|
| Time (hh:mm) | 09:34-12:23 | | |
| Monitoring Depth (m) | Depth Average | Surface and Middle | Bottom |
| D.O. (mg/L) | N/A | 6.59 | 5.71 |
| Turbidity (NTU) | 5.46 | N/A | N/A |
| SS (mg/L) | 7.58 | N/A | N/A |
| Remarks | Dredging works were observed. | | |

| Station | Ma Wan | | |
|----------------------|---------------|--------------------|--------|
| Time (hh:mm) | 09:34-12:23 | | |
| Monitoring Depth (m) | Depth Average | Surface and Middle | Bottom |
| D.O. (mg/L) | N/A | 6.27 | 5.95 |
| Turbidity (NTU) | 0.85 | N/A | N/A |
| SS (mg/L) | 4.00 | N/A | N/A |
| Remarks | | | |

Compliance with Action and Limit Levels

| Parameter | Action Level | | Limit Level | | Mean Value at Impact Stations | Mean Value at Reference Stations | Compliance with Action level | Compliance with Limit Level |
|----------------------------|-----------------|---|-------------------------------|---|-------------------------------|----------------------------------|------------------------------|-----------------------------|
| | Impact Stations | Comparison between I and R ^(a) | Mean Value at Impact Stations | Comparison between I and R ^(a) | | | | |
| DO (Bottom) | < 2.96 | R significantly greater than I (t-test, p < 0.05) | < 2.00 | R significantly greater than I (t-test, p < 0.05) | 6.01 | 5.71 | Y | Y |
| DO (Surface and Mid Depth) | < 3.76 | R significantly greater than I (t-test, p < 0.05) | < 3.11 | R significantly greater than I (t-test, p < 0.05) | 6.86 | 6.59 | Y | Y |
| Turbidity (Depth-averaged) | > 28.14 | I ≥ 1.2 R (6.55) | > 38.32 | I ≥ 1.3 R (7.10) | 5.11 | 5.46 | Y | Y |
| SS (Depth-averaged) | > 37.88 | I ≥ 1.2 R (9.10) | > 61.92 | I ≥ 1.3 R (9.86) | 7.93 | 7.58 | Y | Y |

Table B2: Impact Water Quality Monitoring for Dredging Activities during Mid-flood Tide for 9 June 2010

| Station | Downstream (Impact) | | |
|----------------------|-------------------------------|--------------------|--------|
| Time (hh:mm) | 16:23-18:21 | | |
| Monitoring Depth (m) | Depth Average | Surface and Middle | Bottom |
| D.O. (mg/L) | N/A | 6.61 | 6.33 |
| Turbidity (NTU) | 4.51 | N/A | N/A |
| SS (mg/L) | 5.73 | N/A | N/A |
| Remarks | Dredging works were observed. | | |

| Station | Upstream (Reference) | | |
|----------------------|-------------------------------|--------------------|--------|
| Time (hh:mm) | 16:23-18:21 | | |
| Monitoring Depth (m) | Depth Average | Surface and Middle | Bottom |
| D.O. (mg/L) | N/A | 7.13 | 6.68 |
| Turbidity (NTU) | 5.01 | N/A | N/A |
| SS (mg/L) | 7.50 | N/A | N/A |
| Remarks | Dredging works were observed. | | |

| Station | Ma Wan | | |
|----------------------|---------------|--------------------|--------|
| Time (hh:mm) | 16:23-18:21 | | |
| Monitoring Depth (m) | Depth Average | Surface and Middle | Bottom |
| D.O. (mg/L) | N/A | 6.44 | 6.23 |
| Turbidity (NTU) | 2.15 | N/A | N/A |
| SS (mg/L) | 3.67 | N/A | N/A |
| Remarks | | | |

Compliance with Action and Limit Levels

| Parameter | Action Level | | Limit Level | | Mean Value at Impact Stations | Mean Value at Reference Stations | Compliance with Action level | Compliance with Limit Level |
|----------------------------|-------------------------------|---|-------------------------------|---|-------------------------------|----------------------------------|------------------------------|-----------------------------|
| | Mean Value at Impact Stations | Comparison between I and R ^(a) | Mean Value at Impact Stations | Comparison between I and R ^(a) | | | | |
| DO (Bottom) | < 2.96 | R significantly greater than I (t-test, p < 0.05) | < 2.00 | R significantly greater than I (t-test, p < 0.05) | 6.33 | 6.68 | Y | Y |
| DO (Surface and Mid Depth) | < 3.76 | R significantly greater than I (t-test, p < 0.05) | < 3.11 | R significantly greater than I (t-test, p < 0.05) | 6.61 | 7.13 | Y | Y |
| Turbidity (Depth-averaged) | > 28.14 | I ≥ 1.2 R (6.01) | > 38.32 | I ≥ 1.3 R (6.51) | 4.51 | 5.01 | Y | Y |
| SS (Depth-averaged) | > 37.88 | I ≥ 1.2 R (9.00) | > 61.92 | I ≥ 1.3 R (9.75) | 5.73 | 7.50 | Y | Y |

Note: (a) I = Impact; R = Reference Stations

Table B3: Impact Water Quality Monitoring for Dredging Activities during Mid-ebb Tide for 12 June 2010

| Station | Downstream (Impact) | | |
|----------------------|-------------------------------|--------------------|--------|
| Time (hh:mm) | 11:46-15:00 | | |
| Monitoring Depth (m) | Depth Average | Surface and Middle | Bottom |
| D.O. (mg/L) | N/A | 5.87 | 5.83 |
| Turbidity (NTU) | 7.14 | N/A | N/A |
| SS (mg/L) | 9.47 | N/A | N/A |
| Remarks | Dredging works were observed. | | |

| Station | Upstream (Reference) | | |
|----------------------|-------------------------------|--------------------|--------|
| Time (hh:mm) | 11:46-15:00 | | |
| Monitoring Depth (m) | Depth Average | Surface and Middle | Bottom |
| D.O. (mg/L) | N/A | 5.70 | 5.60 |
| Turbidity (NTU) | 4.78 | N/A | N/A |
| SS (mg/L) | 7.08 | N/A | N/A |
| Remarks | Dredging works were observed. | | |

| Station | Ma Wan | | |
|----------------------|---------------|--------------------|--------|
| Time (hh:mm) | 11:46-15:00 | | |
| Monitoring Depth (m) | Depth Average | Surface and Middle | Bottom |
| D.O. (mg/L) | N/A | 6.25 | 5.81 |
| Turbidity (NTU) | 1.97 | N/A | N/A |
| SS (mg/L) | 5.17 | N/A | N/A |
| Remarks | | | |

Compliance with Action and Limit Levels

| Parameter | Action Level | | Limit Level | | Mean Value at Impact Stations | Mean Value at Reference Stations | Compliance with Action level | Compliance with Limit Level |
|----------------------------|-----------------|---|-------------------------------|---|-------------------------------|----------------------------------|------------------------------|-----------------------------|
| | Impact Stations | Comparison between I and R ^(a) | Mean Value at Impact Stations | Comparison between I and R ^(a) | | | | |
| DO (Bottom) | < 2.96 | R significantly greater than I (t-test, p < 0.05) | < 2.00 | R significantly greater than I (t-test, p < 0.05) | 5.83 | 5.60 | Y | Y |
| DO (Surface and Mid Depth) | < 3.76 | R significantly greater than I (t-test, p < 0.05) | < 3.11 | R significantly greater than I (t-test, p < 0.05) | 5.87 | 5.70 | Y | Y |
| Turbidity (Depth-averaged) | > 28.14 | I ≥ 1.2 R (5.74) | > 38.32 | I ≥ 1.3 R (6.22) | 7.14 | 4.78 | Y | Y |
| SS (Depth-averaged) | > 37.88 | I ≥ 1.2 R (8.50) | > 61.92 | I ≥ 1.3 R (9.21) | 9.47 | 7.08 | Y | Y |

Note: (a) I = Impact; R = Reference Stations

Table B4: Impact Water Quality Monitoring for Dredging Activities during Mid-flood Tide for 12 June 2010

| Station | Downstream (Impact) | | |
|----------------------|-------------------------------|--------------------|--------|
| Time (hh:mm) | 18:56-21:09 | | |
| Monitoring Depth (m) | Depth Average | Surface and Middle | Bottom |
| D.O. (mg/L) | N/A | 5.33 | 5.22 |
| Turbidity (NTU) | 8.13 | N/A | N/A |
| SS (mg/L) | 10.77 | N/A | N/A |
| Remarks | Dredging works were observed. | | |

| Station | Upstream (Reference) | | |
|----------------------|-------------------------------|--------------------|--------|
| Time (hh:mm) | 18:56-21:09 | | |
| Monitoring Depth (m) | Depth Average | Surface and Middle | Bottom |
| D.O. (mg/L) | N/A | 6.04 | 5.69 |
| Turbidity (NTU) | 7.46 | N/A | N/A |
| SS (mg/L) | 11.50 | N/A | N/A |
| Remarks | Dredging works were observed. | | |

| Station | Ma Wan | | |
|----------------------|---------------|--------------------|--------|
| Time (hh:mm) | 18:56-21:09 | | |
| Monitoring Depth (m) | Depth Average | Surface and Middle | Bottom |
| D.O. (mg/L) | N/A | 5.70 | 5.77 |
| Turbidity (NTU) | 4.58 | N/A | N/A |
| SS (mg/L) | 5.83 | N/A | N/A |
| Remarks | | | |

Compliance with Action and Limit Levels

| Parameter | Action Level | | Limit Level | | Mean Value at Impact Stations | Mean Value at Reference Stations | Compliance with Action level | Compliance with Limit Level |
|----------------------------|-------------------------------|---|-------------------------------|---|-------------------------------|----------------------------------|------------------------------|-----------------------------|
| | Mean Value at Impact Stations | Comparison between I and R ^(a) | Mean Value at Impact Stations | Comparison between I and R ^(a) | | | | |
| DO (Bottom) | < 2.96 | R significantly greater than I (t-test, p < 0.05) | < 2.00 | R significantly greater than I (t-test, p < 0.05) | 5.22 | 5.69 | Y | Y |
| DO (Surface and Mid Depth) | < 3.76 | R significantly greater than I (t-test, p < 0.05) | < 3.11 | R significantly greater than I (t-test, p < 0.05) | 5.33 | 6.04 | Y | Y |
| Turbidity (Depth-averaged) | > 28.14 | I ≥ 1.2 R (8.95) | > 38.32 | I ≥ 1.3 R (9.70) | 8.13 | 7.46 | Y | Y |
| SS (Depth-averaged) | > 37.88 | I ≥ 1.2 R (13.80) | > 61.92 | I ≥ 1.3 R (14.95) | 10.77 | 11.50 | Y | Y |

Note: (a) I = Impact; R = Reference Stations

Table B5: Impact Water Quality Monitoring for Dredging Activities during Mid-ebb Tide for 17 June 2010

| Station | Downstream (Impact) | | |
|----------------------|-------------------------------|--------------------|--------|
| Time (hh:mm) | 15:39-17:40 | | |
| Monitoring Depth (m) | Depth Average | Surface and Middle | Bottom |
| D.O. (mg/L) | N/A | 6.20 | 5.59 |
| Turbidity (NTU) | 8.88 | N/A | N/A |
| SS (mg/L) | 10.50 | N/A | N/A |
| Remarks | Dredging works were observed. | | |

| Station | Upstream (Reference) | | |
|----------------------|-------------------------------|--------------------|--------|
| Time (hh:mm) | 15:39-17:40 | | |
| Monitoring Depth (m) | Depth Average | Surface and Middle | Bottom |
| D.O. (mg/L) | N/A | 6.48 | 5.76 |
| Turbidity (NTU) | 9.43 | N/A | N/A |
| SS (mg/L) | 12.50 | N/A | N/A |
| Remarks | Dredging works were observed. | | |

| Station | Ma Wan | | |
|----------------------|---------------|--------------------|--------|
| Time (hh:mm) | 15:39-17:40 | | |
| Monitoring Depth (m) | Depth Average | Surface and Middle | Bottom |
| D.O. (mg/L) | N/A | 6.94 | 6.25 |
| Turbidity (NTU) | 2.57 | N/A | N/A |
| SS (mg/L) | 3.50 | N/A | N/A |
| Remarks | | | |

Compliance with Action and Limit Levels

| Parameter | Action Level | | Limit Level | | Mean Value at Impact Stations | Mean Value at Reference Stations | Compliance with Action level | Compliance with Limit Level |
|----------------------------|-----------------|---|-------------------------------|---|-------------------------------|----------------------------------|------------------------------|-----------------------------|
| | Impact Stations | Comparison between I and R ^(a) | Mean Value at Impact Stations | Comparison between I and R ^(a) | | | | |
| DO (Bottom) | < 2.96 | R significantly greater than I (t-test, p < 0.05) | < 2.00 | R significantly greater than I (t-test, p < 0.05) | 5.59 | 5.76 | Y | Y |
| DO (Surface and Mid Depth) | < 3.76 | R significantly greater than I (t-test, p < 0.05) | < 3.11 | R significantly greater than I (t-test, p < 0.05) | 6.20 | 6.48 | Y | Y |
| Turbidity (Depth-averaged) | > 28.14 | I ≥ 1.2 R (11.32) | > 38.32 | I ≥ 1.3 R (12.26) | 8.88 | 9.43 | Y | Y |
| SS (Depth-averaged) | > 37.88 | I ≥ 1.2 R (15.00) | > 61.92 | I ≥ 1.3 R (16.25) | 10.50 | 12.50 | Y | Y |

Note: (a) I = Impact; R = Reference Stations

Table B6: Impact Water Quality Monitoring for Dredging Activities during Mid-flood Tide for 17 June 2010

| Station | Downstream (Impact) | | |
|----------------------|-------------------------------|--------------------|--------|
| Time (hh:mm) | 08:20-11:18 | | |
| Monitoring Depth (m) | Depth Average | Surface and Middle | Bottom |
| D.O. (mg/L) | N/A | 5.86 | 5.66 |
| Turbidity (NTU) | 6.30 | N/A | N/A |
| SS (mg/L) | 6.43 | N/A | N/A |
| Remarks | Dredging works were observed. | | |

| Station | Upstream (Reference) | | |
|----------------------|-------------------------------|--------------------|--------|
| Time (hh:mm) | 08:20-11:18 | | |
| Monitoring Depth (m) | Depth Average | Surface and Middle | Bottom |
| D.O. (mg/L) | N/A | 5.93 | 5.75 |
| Turbidity (NTU) | 5.20 | N/A | N/A |
| SS (mg/L) | 6.17 | N/A | N/A |
| Remarks | Dredging works were observed. | | |

| Station | Ma Wan | | |
|----------------------|---------------|--------------------|--------|
| Time (hh:mm) | 08:20-11:18 | | |
| Monitoring Depth (m) | Depth Average | Surface and Middle | Bottom |
| D.O. (mg/L) | N/A | 5.91 | 5.46 |
| Turbidity (NTU) | 3.48 | N/A | N/A |
| SS (mg/L) | 4.67 | N/A | N/A |
| Remarks | | | |

Compliance with Action and Limit Levels

| Parameter | Action Level | | Limit Level | | Mean Value at Impact Stations | Mean Value at Reference Stations | Compliance with Action level | Compliance with Limit Level |
|----------------------------|-------------------------------|---|-------------------------------|---|-------------------------------|----------------------------------|------------------------------|-----------------------------|
| | Mean Value at Impact Stations | Comparison between I and R ^(a) | Mean Value at Impact Stations | Comparison between I and R ^(a) | | | | |
| DO (Bottom) | < 2.96 | R significantly greater than I (t-test, p < 0.05) | < 2.00 | R significantly greater than I (t-test, p < 0.05) | 5.66 | 5.75 | Y | Y |
| DO (Surface and Mid Depth) | < 3.76 | R significantly greater than I (t-test, p < 0.05) | < 3.11 | R significantly greater than I (t-test, p < 0.05) | 5.86 | 5.93 | Y | Y |
| Turbidity (Depth-averaged) | > 28.14 | I ≥ 1.2 R (6.24) | > 38.32 | I ≥ 1.3 R (6.76) | 6.30 | 5.20 | Y | Y |
| SS (Depth-averaged) | > 37.88 | I ≥ 1.2 R (7.40) | > 61.92 | I ≥ 1.3 R (8.02) | 6.43 | 6.17 | Y | Y |

Note: (a) I = Impact; R = Reference Stations

Table B7: Impact Water Quality Monitoring for Dredging Activities during Mid-ebb Tide for 19 June 2010

| Station | Downstream (Impact) | | |
|----------------------|-------------------------------|--------------------|--------|
| Time (hh:mm) | 17:26-19:34 | | |
| Monitoring Depth (m) | Depth Average | Surface and Middle | Bottom |
| D.O. (mg/L) | N/A | 6.03 | 4.85 |
| Turbidity (NTU) | 8.97 | N/A | N/A |
| SS (mg/L) | 11.00 | N/A | N/A |
| Remarks | Dredging works were observed. | | |

| Station | Upstream (Reference) | | |
|----------------------|-------------------------------|--------------------|--------|
| Time (hh:mm) | 17:26-19:34 | | |
| Monitoring Depth (m) | Depth Average | Surface and Middle | Bottom |
| D.O. (mg/L) | N/A | 5.56 | 4.74 |
| Turbidity (NTU) | 7.88 | N/A | N/A |
| SS (mg/L) | 8.08 | N/A | N/A |
| Remarks | Dredging works were observed. | | |

| Station | Ma Wan | | |
|----------------------|---------------|--------------------|--------|
| Time (hh:mm) | 17:26-19:34 | | |
| Monitoring Depth (m) | Depth Average | Surface and Middle | Bottom |
| D.O. (mg/L) | N/A | 6.69 | 5.14 |
| Turbidity (NTU) | 3.43 | N/A | N/A |
| SS (mg/L) | 3.00 | N/A | N/A |
| Remarks | | | |

Compliance with Action and Limit Levels

| Parameter | Action Level | | Limit Level | | Mean Value at Impact Stations | Mean Value at Reference Stations | Compliance with Action level | Compliance with Limit Level |
|----------------------------|-----------------|---|-------------------------------|---|-------------------------------|----------------------------------|------------------------------|-----------------------------|
| | Impact Stations | Comparison between I and R ^(a) | Mean Value at Impact Stations | Comparison between I and R ^(a) | | | | |
| DO (Bottom) | < 2.96 | R significantly greater than I (t-test, p < 0.05) | < 2.00 | R significantly greater than I (t-test, p < 0.05) | 4.85 | 4.74 | Y | Y |
| DO (Surface and Mid Depth) | < 3.76 | R significantly greater than I (t-test, p < 0.05) | < 3.11 | R significantly greater than I (t-test, p < 0.05) | 6.03 | 5.56 | Y | Y |
| Turbidity (Depth-averaged) | > 28.14 | I ≥ 1.2 R (9.45) | > 38.32 | I ≥ 1.3 R (10.24) | 8.97 | 7.88 | Y | Y |
| SS (Depth-averaged) | > 37.88 | I ≥ 1.2 R (9.70) | > 61.92 | I ≥ 1.3 R (10.51) | 11.00 | 8.08 | Y | Y |

Note: (a) I = Impact; R = Reference Stations

Table B8: Impact Water Quality Monitoring for Dredging Activities during Mid-flood Tide for 19 June 2010

| Station | Downstream (Impact) | | |
|----------------------|-------------------------------|--------------------|--------|
| Time (hh:mm) | 10:52-13:37 | | |
| Monitoring Depth (m) | Depth Average | Surface and Middle | Bottom |
| D.O. (mg/L) | N/A | 5.76 | 5.24 |
| Turbidity (NTU) | 8.59 | N/A | N/A |
| SS (mg/L) | 8.47 | N/A | N/A |
| Remarks | Dredging works were observed. | | |

| Station | Upstream (Reference) | | |
|----------------------|-------------------------------|--------------------|--------|
| Time (hh:mm) | 10:52-13:37 | | |
| Monitoring Depth (m) | Depth Average | Surface and Middle | Bottom |
| D.O. (mg/L) | N/A | 6.46 | 5.57 |
| Turbidity (NTU) | 7.59 | N/A | N/A |
| SS (mg/L) | 8.25 | N/A | N/A |
| Remarks | Dredging works were observed. | | |

| Station | Ma Wan | | |
|----------------------|---------------|--------------------|--------|
| Time (hh:mm) | 10:52-13:37 | | |
| Monitoring Depth (m) | Depth Average | Surface and Middle | Bottom |
| D.O. (mg/L) | N/A | 5.82 | 4.75 |
| Turbidity (NTU) | 4.68 | N/A | N/A |
| SS (mg/L) | 5.20 | N/A | N/A |
| Remarks | | | |

Compliance with Action and Limit Levels

| Parameter | Action Level | | Limit Level | | Mean Value at Impact Stations | Mean Value at Reference Stations | Compliance with Action level | Compliance with Limit Level |
|----------------------------|-------------------------------|---|-------------------------------|---|-------------------------------|----------------------------------|------------------------------|-----------------------------|
| | Mean Value at Impact Stations | Comparison between I and R ^(a) | Mean Value at Impact Stations | Comparison between I and R ^(a) | | | | |
| DO (Bottom) | < 2.96 | R significantly greater than I (t-test, p < 0.05) | < 2.00 | R significantly greater than I (t-test, p < 0.05) | 5.24 | 5.57 | Y | Y |
| DO (Surface and Mid Depth) | < 3.76 | R significantly greater than I (t-test, p < 0.05) | < 3.11 | R significantly greater than I (t-test, p < 0.05) | 5.76 | 6.46 | Y | Y |
| Turbidity (Depth-averaged) | > 28.14 | I ≥ 1.2 R (9.11) | > 38.32 | I ≥ 1.3 R (9.87) | 8.59 | 7.59 | Y | Y |
| SS (Depth-averaged) | > 37.88 | I ≥ 1.2 R (9.90) | > 61.92 | I ≥ 1.3 R (10.73) | 8.47 | 8.25 | Y | Y |

Note: (a) I = Impact; R = Reference Stations

Table B9: Impact Water Quality Monitoring for Dredging Activities during Mid-ebb Tide for 21 June 2010

| Station | Downstream (Impact) | | |
|----------------------|-------------------------------|--------------------|--------|
| Time (hh:mm) | 07:49-10:44 | | |
| Monitoring Depth (m) | Depth Average | Surface and Middle | Bottom |
| D.O. (mg/L) | N/A | 5.61 | 4.64 |
| Turbidity (NTU) | 7.87 | N/A | N/A |
| SS (mg/L) | 7.67 | N/A | N/A |
| Remarks | Dredging works were observed. | | |

| Station | Upstream (Reference) | | |
|----------------------|-------------------------------|--------------------|--------|
| Time (hh:mm) | 07:49-10:44 | | |
| Monitoring Depth (m) | Depth Average | Surface and Middle | Bottom |
| D.O. (mg/L) | N/A | 5.59 | 4.42 |
| Turbidity (NTU) | 6.18 | N/A | N/A |
| SS (mg/L) | 5.50 | N/A | N/A |
| Remarks | Dredging works were observed. | | |

| Station | Ma Wan | | |
|----------------------|---------------|--------------------|--------|
| Time (hh:mm) | 07:49-10:44 | | |
| Monitoring Depth (m) | Depth Average | Surface and Middle | Bottom |
| D.O. (mg/L) | N/A | 6.07 | 4.68 |
| Turbidity (NTU) | 3.35 | N/A | N/A |
| SS (mg/L) | 4.33 | N/A | N/A |
| Remarks | | | |

Compliance with Action and Limit Levels

| Parameter | Action Level | | Limit Level | | Mean Value at Impact Stations | Mean Value at Reference Stations | Compliance with Action level | Compliance with Limit Level |
|----------------------------|-----------------|---|-------------------------------|---|-------------------------------|----------------------------------|------------------------------|-----------------------------|
| | Impact Stations | Comparison between I and R ^(a) | Mean Value at Impact Stations | Comparison between I and R ^(a) | | | | |
| DO (Bottom) | < 2.96 | R significantly greater than I (t-test, p < 0.05) | < 2.00 | R significantly greater than I (t-test, p < 0.05) | 4.64 | 4.42 | Y | Y |
| DO (Surface and Mid Depth) | < 3.76 | R significantly greater than I (t-test, p < 0.05) | < 3.11 | R significantly greater than I (t-test, p < 0.05) | 5.61 | 5.59 | Y | Y |
| Turbidity (Depth-averaged) | > 28.14 | I ≥ 1.2 R (7.41) | > 38.32 | I ≥ 1.3 R (8.03) | 7.87 | 6.18 | Y | Y |
| SS (Depth-averaged) | > 37.88 | I ≥ 1.2 R (6.60) | > 61.92 | I ≥ 1.3 R (7.15) | 7.67 | 5.50 | Y | Y |

Note: (a) I = Impact; R = Reference Stations

Table B10: Impact Water Quality Monitoring for Dredging Activities during Mid-flood Tide for 21 June 2010

| Station | Downstream (Impact) | | |
|----------------------|-------------------------------|--------------------|--------|
| Time (hh:mm) | 14:07-16:34 | | |
| Monitoring Depth (m) | Depth Average | Surface and Middle | Bottom |
| D.O. (mg/L) | N/A | 5.81 | 5.15 |
| Turbidity (NTU) | 7.31 | N/A | N/A |
| SS (mg/L) | 7.80 | N/A | N/A |
| Remarks | Dredging works were observed. | | |

| Station | Upstream (Reference) | | |
|----------------------|-------------------------------|--------------------|--------|
| Time (hh:mm) | 14:07-16:34 | | |
| Monitoring Depth (m) | Depth Average | Surface and Middle | Bottom |
| D.O. (mg/L) | N/A | 6.07 | 5.04 |
| Turbidity (NTU) | 7.83 | N/A | N/A |
| SS (mg/L) | 6.58 | N/A | N/A |
| Remarks | Dredging works were observed. | | |

| Station | Ma Wan | | |
|----------------------|---------------|--------------------|--------|
| Time (hh:mm) | 14:07-16:34 | | |
| Monitoring Depth (m) | Depth Average | Surface and Middle | Bottom |
| D.O. (mg/L) | N/A | 5.55 | 4.19 |
| Turbidity (NTU) | 3.17 | N/A | N/A |
| SS (mg/L) | 5.17 | N/A | N/A |
| Remarks | | | |

Compliance with Action and Limit Levels

| Parameter | Action Level | | Limit Level | | Mean Value at Impact Stations | Mean Value at Reference Stations | Compliance with Action level | Compliance with Limit Level |
|----------------------------|-------------------------------|---|-------------------------------|---|-------------------------------|----------------------------------|------------------------------|-----------------------------|
| | Mean Value at Impact Stations | Comparison between I and R ^(a) | Mean Value at Impact Stations | Comparison between I and R ^(a) | | | | |
| DO (Bottom) | < 2.96 | R significantly greater than I (t-test, p < 0.05) | < 2.00 | R significantly greater than I (t-test, p < 0.05) | 5.15 | 5.04 | Y | Y |
| DO (Surface and Mid Depth) | < 3.76 | R significantly greater than I (t-test, p < 0.05) | < 3.11 | R significantly greater than I (t-test, p < 0.05) | 5.81 | 6.07 | Y | Y |
| Turbidity (Depth-averaged) | > 28.14 | I ≥ 1.2 R (9.39) | > 38.32 | I ≥ 1.3 R (10.17) | 7.31 | 7.83 | Y | Y |
| SS (Depth-averaged) | > 37.88 | I ≥ 1.2 R (7.90) | > 61.92 | I ≥ 1.3 R (8.56) | 7.80 | 6.58 | Y | Y |

Note: (a) I = Impact; R = Reference Stations

Table B11: Impact Water Quality Monitoring for Dredging Activities during Mid-ebb Tide for 23 June 2010

| Station | Downstream (Impact) | | |
|----------------------|-------------------------------|--------------------|--------|
| Time (hh:mm) | 09:31-12:37 | | |
| Monitoring Depth (m) | Depth Average | Surface and Middle | Bottom |
| D.O. (mg/L) | N/A | 5.21 | 4.10 |
| Turbidity (NTU) | 9.80 | N/A | N/A |
| SS (mg/L) | 9.20 | N/A | N/A |
| Remarks | Dredging works were observed. | | |

| Station | Upstream (Reference) | | |
|----------------------|-------------------------------|--------------------|--------|
| Time (hh:mm) | 09:31-12:37 | | |
| Monitoring Depth (m) | Depth Average | Surface and Middle | Bottom |
| D.O. (mg/L) | N/A | 5.39 | 4.44 |
| Turbidity (NTU) | 7.15 | N/A | N/A |
| SS (mg/L) | 6.58 | N/A | N/A |
| Remarks | Dredging works were observed. | | |

| Station | Ma Wan | | |
|----------------------|---------------|--------------------|--------|
| Time (hh:mm) | 09:31-12:37 | | |
| Monitoring Depth (m) | Depth Average | Surface and Middle | Bottom |
| D.O. (mg/L) | N/A | 6.36 | 4.22 |
| Turbidity (NTU) | 4.88 | N/A | N/A |
| SS (mg/L) | 5.83 | N/A | N/A |
| Remarks | | | |

Compliance with Action and Limit Levels

| Parameter | Action Level | | Limit Level | | Mean Value at Impact Stations | Mean Value at Reference Stations | Compliance with Action level | Compliance with Limit Level |
|----------------------------|-----------------|---|-------------------------------|---|-------------------------------|----------------------------------|------------------------------|-----------------------------|
| | Impact Stations | Comparison between I and R ^(a) | Mean Value at Impact Stations | Comparison between I and R ^(a) | | | | |
| DO (Bottom) | < 2.96 | R significantly greater than I (t-test, p < 0.05) | < 2.00 | R significantly greater than I (t-test, p < 0.05) | 4.10 | 4.44 | Y | Y |
| DO (Surface and Mid Depth) | < 3.76 | R significantly greater than I (t-test, p < 0.05) | < 3.11 | R significantly greater than I (t-test, p < 0.05) | 5.21 | 5.39 | Y | Y |
| Turbidity (Depth-averaged) | > 28.14 | I ≥ 1.2 R (8.58) | > 38.32 | I ≥ 1.3 R (9.30) | 9.80 | 7.15 | Y | Y |
| SS (Depth-averaged) | > 37.88 | I ≥ 1.2 R (7.90) | > 61.92 | I ≥ 1.3 R (8.56) | 9.20 | 6.58 | Y | Y |

Note: (a) I = Impact; R = Reference Stations

Table B12: Impact Water Quality Monitoring for Dredging Activities during Mid-flood Tide for 23 June 2010

| Station | Downstream (Impact) | | |
|----------------------|-------------------------------|--------------------|--------|
| Time (hh:mm) | 17:04-19:10 | | |
| Monitoring Depth (m) | Depth Average | Surface and Middle | Bottom |
| D.O. (mg/L) | N/A | 5.34 | 4.75 |
| Turbidity (NTU) | 9.68 | N/A | N/A |
| SS (mg/L) | 9.37 | N/A | N/A |
| Remarks | Dredging works were observed. | | |

| Station | Upstream (Reference) | | |
|----------------------|-------------------------------|--------------------|--------|
| Time (hh:mm) | 17:04-19:10 | | |
| Monitoring Depth (m) | Depth Average | Surface and Middle | Bottom |
| D.O. (mg/L) | N/A | 5.53 | 4.72 |
| Turbidity (NTU) | 12.59 | N/A | N/A |
| SS (mg/L) | 13.58 | N/A | N/A |
| Remarks | Dredging works were observed. | | |

| Station | Ma Wan | | |
|----------------------|---------------|--------------------|--------|
| Time (hh:mm) | 17:04-19:10 | | |
| Monitoring Depth (m) | Depth Average | Surface and Middle | Bottom |
| D.O. (mg/L) | N/A | 5.01 | 4.09 |
| Turbidity (NTU) | 6.28 | N/A | N/A |
| SS (mg/L) | 7.67 | N/A | N/A |
| Remarks | | | |

Compliance with Action and Limit Levels

| Parameter | Action Level | | Limit Level | | Mean Value at Impact Stations | Mean Value at Reference Stations | Compliance with Action level | Compliance with Limit Level |
|----------------------------|-------------------------------|---|-------------------------------|---|-------------------------------|----------------------------------|------------------------------|-----------------------------|
| | Mean Value at Impact Stations | Comparison between I and R ^(a) | Mean Value at Impact Stations | Comparison between I and R ^(a) | | | | |
| DO (Bottom) | < 2.96 | R significantly greater than I (t-test, p < 0.05) | < 2.00 | R significantly greater than I (t-test, p < 0.05) | 4.75 | 4.72 | Y | Y |
| DO (Surface and Mid Depth) | < 3.76 | R significantly greater than I (t-test, p < 0.05) | < 3.11 | R significantly greater than I (t-test, p < 0.05) | 5.34 | 5.53 | Y | Y |
| Turbidity (Depth-averaged) | > 28.14 | I ≥ 1.2 R (15.11) | > 38.32 | I ≥ 1.3 R (16.37) | 9.68 | 12.59 | Y | Y |
| SS (Depth-averaged) | > 37.88 | I ≥ 1.2 R (16.30) | > 61.92 | I ≥ 1.3 R (17.66) | 9.37 | 13.58 | Y | Y |

Note: (a) I = Impact; R = Reference Stations

Table B13: Impact Water Quality Monitoring for Dredging Activities during Mid-ebb Tide for 25 June 2010

| Station | Downstream (Impact) | | |
|----------------------|-------------------------------|--------------------|--------|
| Time (hh:mm) | 10:59-14:01 | | |
| Monitoring Depth (m) | Depth Average | Surface and Middle | Bottom |
| D.O. (mg/L) | N/A | 5.90 | 4.62 |
| Turbidity (NTU) | 12.33 | N/A | N/A |
| SS (mg/L) | 13.03 | N/A | N/A |
| Remarks | Dredging works were observed. | | |

| Station | Upstream (Reference) | | |
|----------------------|-------------------------------|--------------------|--------|
| Time (hh:mm) | 10:59-14:01 | | |
| Monitoring Depth (m) | Depth Average | Surface and Middle | Bottom |
| D.O. (mg/L) | N/A | 5.86 | 4.60 |
| Turbidity (NTU) | 11.34 | N/A | N/A |
| SS (mg/L) | 11.42 | N/A | N/A |
| Remarks | Dredging works were observed. | | |

| Station | Ma Wan | | |
|----------------------|---------------|--------------------|--------|
| Time (hh:mm) | 10:59-14:01 | | |
| Monitoring Depth (m) | Depth Average | Surface and Middle | Bottom |
| D.O. (mg/L) | N/A | 6.16 | 4.20 |
| Turbidity (NTU) | 4.92 | N/A | N/A |
| SS (mg/L) | 5.00 | N/A | N/A |
| Remarks | | | |

Compliance with Action and Limit Levels

| Parameter | Action Level | | Limit Level | | Mean Value at Impact Stations | Mean Value at Reference Stations | Compliance with Action level | Compliance with Limit Level |
|----------------------------|-----------------|---|-------------------------------|---|-------------------------------|----------------------------------|------------------------------|-----------------------------|
| | Impact Stations | Comparison between I and R ^(a) | Mean Value at Impact Stations | Comparison between I and R ^(a) | | | | |
| DO (Bottom) | < 2.96 | R significantly greater than I (t-test, p < 0.05) | < 2.00 | R significantly greater than I (t-test, p < 0.05) | 4.62 | 4.60 | Y | Y |
| DO (Surface and Mid Depth) | < 3.76 | R significantly greater than I (t-test, p < 0.05) | < 3.11 | R significantly greater than I (t-test, p < 0.05) | 5.90 | 5.86 | Y | Y |
| Turbidity (Depth-averaged) | > 28.14 | I ≥ 1.2 R (13.61) | > 38.32 | I ≥ 1.3 R (14.74) | 12.33 | 11.34 | Y | Y |
| SS (Depth-averaged) | > 37.88 | I ≥ 1.2 R (13.70) | > 61.92 | I ≥ 1.3 R (14.84) | 13.03 | 11.42 | Y | Y |

Note: (a) I = Impact; R = Reference Stations

Table B14: Impact Water Quality Monitoring for Dredging Activities during Mid-flood Tide for 25 June 2010

| Station | Downstream (Impact) | | |
|----------------------|-------------------------------|--------------------|--------|
| Time (hh:mm) | 18:31-20:37 | | |
| Monitoring Depth (m) | Depth Average | Surface and Middle | Bottom |
| D.O. (mg/L) | N/A | 5.68 | 5.09 |
| Turbidity (NTU) | 13.07 | N/A | N/A |
| SS (mg/L) | 12.47 | N/A | N/A |
| Remarks | Dredging works were observed. | | |

| Station | Upstream (Reference) | | |
|----------------------|-------------------------------|--------------------|--------|
| Time (hh:mm) | 18:31-20:37 | | |
| Monitoring Depth (m) | Depth Average | Surface and Middle | Bottom |
| D.O. (mg/L) | N/A | 6.17 | 5.82 |
| Turbidity (NTU) | 14.99 | N/A | N/A |
| SS (mg/L) | 16.17 | N/A | N/A |
| Remarks | Dredging works were observed. | | |

| Station | Ma Wan | | |
|----------------------|---------------|--------------------|--------|
| Time (hh:mm) | 18:31-20:37 | | |
| Monitoring Depth (m) | Depth Average | Surface and Middle | Bottom |
| D.O. (mg/L) | N/A | 4.41 | 3.94 |
| Turbidity (NTU) | 8.95 | N/A | N/A |
| SS (mg/L) | 9.83 | N/A | N/A |
| Remarks | | | |

Compliance with Action and Limit Levels

| Parameter | Action Level | | Limit Level | | Mean Value at Impact Stations | Mean Value at Reference Stations | Compliance with Action level | Compliance with Limit Level |
|----------------------------|-------------------------------|---|-------------------------------|---|-------------------------------|----------------------------------|------------------------------|-----------------------------|
| | Mean Value at Impact Stations | Comparison between I and R ^(a) | Mean Value at Impact Stations | Comparison between I and R ^(a) | | | | |
| DO (Bottom) | < 2.96 | R significantly greater than I (t-test, p < 0.05) | < 2.00 | R significantly greater than I (t-test, p < 0.05) | 5.09 | 5.82 | Y | Y |
| DO (Surface and Mid Depth) | < 3.76 | R significantly greater than I (t-test, p < 0.05) | < 3.11 | R significantly greater than I (t-test, p < 0.05) | 5.68 | 6.17 | Y | Y |
| Turbidity (Depth-averaged) | > 28.14 | I ≥ 1.2 R (17.99) | > 38.32 | I ≥ 1.3 R (19.49) | 13.07 | 14.99 | Y | Y |
| SS (Depth-averaged) | > 37.88 | I ≥ 1.2 R (19.40) | > 61.92 | I ≥ 1.3 R (21.02) | 12.47 | 16.17 | Y | Y |

Note: (a) I = Impact; R = Reference Stations

Table B15: Impact Water Quality Monitoring for Dredging Activities during Mid-ebb Tide for 28 June 2010

| Station | Downstream (Impact) | | |
|----------------------|-------------------------------|--------------------|--------|
| Time (hh:mm) | 13:12-15:11 | | |
| Monitoring Depth (m) | Depth Average | Surface and Middle | Bottom |
| D.O. (mg/L) | N/A | 4.91 | 4.27 |
| Turbidity (NTU) | 14.30 | N/A | N/A |
| SS (mg/L) | 18.23 | N/A | N/A |
| Remarks | Dredging works were observed. | | |

| Station | Upstream (Reference) | | |
|----------------------|-------------------------------|--------------------|--------|
| Time (hh:mm) | 13:12-15:11 | | |
| Monitoring Depth (m) | Depth Average | Surface and Middle | Bottom |
| D.O. (mg/L) | N/A | 4.71 | 3.86 |
| Turbidity (NTU) | 18.80 | N/A | N/A |
| SS (mg/L) | 22.00 | N/A | N/A |
| Remarks | Dredging works were observed. | | |

| Station | Ma Wan | | |
|----------------------|---------------|--------------------|--------|
| Time (hh:mm) | 13:12-15:11 | | |
| Monitoring Depth (m) | Depth Average | Surface and Middle | Bottom |
| D.O. (mg/L) | N/A | 5.04 | 4.51 |
| Turbidity (NTU) | 6.75 | N/A | N/A |
| SS (mg/L) | 7.83 | N/A | N/A |
| Remarks | | | |

Compliance with Action and Limit Levels

| Parameter | Action Level | | Limit Level | | Mean Value at Impact Stations | Mean Value at Reference Stations | Compliance with Action level | Compliance with Limit Level |
|----------------------------|-----------------|---|-------------------------------|---|-------------------------------|----------------------------------|------------------------------|-----------------------------|
| | Impact Stations | Comparison between I and R ^(a) | Mean Value at Impact Stations | Comparison between I and R ^(a) | | | | |
| DO (Bottom) | < 2.96 | R significantly greater than I (t-test, p < 0.05) | < 2.00 | R significantly greater than I (t-test, p < 0.05) | 4.27 | 3.86 | Y | Y |
| DO (Surface and Mid Depth) | < 3.76 | R significantly greater than I (t-test, p < 0.05) | < 3.11 | R significantly greater than I (t-test, p < 0.05) | 4.91 | 4.71 | Y | Y |
| Turbidity (Depth-averaged) | > 28.14 | I ≥ 1.2 R (22.56) | > 38.32 | I ≥ 1.3 R (24.44) | 14.30 | 18.80 | Y | Y |
| SS (Depth-averaged) | > 37.88 | I ≥ 1.2 R (26.40) | > 61.92 | I ≥ 1.3 R (28.60) | 18.23 | 22.00 | Y | Y |

Note: (a) I = Impact; R = Reference Stations

Table B16: Impact Water Quality Monitoring for Dredging Activities during Mid-flood Tide for 28 June 2010

| Station | Downstream (Impact) | | |
|----------------------|-------------------------------|--------------------|--------|
| Time (hh:mm) | 05:42-08:26 | | |
| Monitoring Depth (m) | Depth Average | Surface and Middle | Bottom |
| D.O. (mg/L) | N/A | 4.88 | 4.35 |
| Turbidity (NTU) | 9.03 | N/A | N/A |
| SS (mg/L) | 8.97 | N/A | N/A |
| Remarks | Dredging works were observed. | | |

| Station | Upstream (Reference) | | |
|----------------------|-------------------------------|--------------------|--------|
| Time (hh:mm) | 05:42-08:26 | | |
| Monitoring Depth (m) | Depth Average | Surface and Middle | Bottom |
| D.O. (mg/L) | N/A | 4.75 | 4.36 |
| Turbidity (NTU) | 10.17 | N/A | N/A |
| SS (mg/L) | 11.92 | N/A | N/A |
| Remarks | Dredging works were observed. | | |

| Station | Ma Wan | | |
|----------------------|---------------|--------------------|--------|
| Time (hh:mm) | 05:42-08:26 | | |
| Monitoring Depth (m) | Depth Average | Surface and Middle | Bottom |
| D.O. (mg/L) | N/A | 4.47 | 3.66 |
| Turbidity (NTU) | 5.35 | N/A | N/A |
| SS (mg/L) | 5.83 | N/A | N/A |
| Remarks | | | |

Compliance with Action and Limit Levels

| Parameter | Action Level | | Limit Level | | Mean Value at Impact Stations | Mean Value at Reference Stations | Compliance with Action level | Compliance with Limit Level |
|----------------------------|-------------------------------|---|-------------------------------|---|-------------------------------|----------------------------------|------------------------------|-----------------------------|
| | Mean Value at Impact Stations | Comparison between I and R ^(a) | Mean Value at Impact Stations | Comparison between I and R ^(a) | | | | |
| DO (Bottom) | < 2.96 | R significantly greater than I (t-test, p < 0.05) | < 2.00 | R significantly greater than I (t-test, p < 0.05) | 4.35 | 4.36 | Y | Y |
| DO (Surface and Mid Depth) | < 3.76 | R significantly greater than I (t-test, p < 0.05) | < 3.11 | R significantly greater than I (t-test, p < 0.05) | 4.88 | 4.75 | Y | Y |
| Turbidity (Depth-averaged) | > 28.14 | I ≥ 1.2 R (12.20) | > 38.32 | I ≥ 1.3 R (13.22) | 9.03 | 10.17 | Y | Y |
| SS (Depth-averaged) | > 37.88 | I ≥ 1.2 R (14.30) | > 61.92 | I ≥ 1.3 R (15.49) | 8.97 | 11.92 | Y | Y |

Note: (a) I = Impact; R = Reference Stations

Table B17: Impact Water Quality Monitoring for Dredging Activities during Mid-ebb Tide for 30 June 2010

| Station | Downstream (Impact) | | |
|----------------------|-------------------------------|--------------------|--------|
| Time (hh:mm) | 14:13-16:23 | | |
| Monitoring Depth (m) | Depth Average | Surface and Middle | Bottom |
| D.O. (mg/L) | N/A | 4.39 | 3.75 |
| Turbidity (NTU) | 16.82 | N/A | N/A |
| SS (mg/L) | 18.23 | N/A | N/A |
| Remarks | Dredging works were observed. | | |

| Station | Upstream (Reference) | | |
|----------------------|-------------------------------|--------------------|--------|
| Time (hh:mm) | 14:13-16:23 | | |
| Monitoring Depth (m) | Depth Average | Surface and Middle | Bottom |
| D.O. (mg/L) | N/A | 4.37 | 3.82 |
| Turbidity (NTU) | 12.70 | N/A | N/A |
| SS (mg/L) | 13.42 | N/A | N/A |
| Remarks | Dredging works were observed. | | |

| Station | Ma Wan | | |
|----------------------|---------------|--------------------|--------|
| Time (hh:mm) | 14:13-16:23 | | |
| Monitoring Depth (m) | Depth Average | Surface and Middle | Bottom |
| D.O. (mg/L) | N/A | 5.01 | 4.09 |
| Turbidity (NTU) | 5.32 | N/A | N/A |
| SS (mg/L) | 5.00 | N/A | N/A |
| Remarks | | | |

Compliance with Action and Limit Levels

| Parameter | Action Level | | Limit Level | | Mean Value at Impact Stations | Mean Value at Reference Stations | Compliance with Action level | Compliance with Limit Level |
|----------------------------|-----------------|---|-------------------------------|---|-------------------------------|----------------------------------|------------------------------|-----------------------------|
| | Impact Stations | Comparison between I and R ^(a) | Mean Value at Impact Stations | Comparison between I and R ^(a) | | | | |
| DO (Bottom) | < 2.96 | R significantly greater than I (t-test, p < 0.05) | < 2.00 | R significantly greater than I (t-test, p < 0.05) | 3.75 | 3.82 | Y | Y |
| DO (Surface and Mid Depth) | < 3.76 | R significantly greater than I (t-test, p < 0.05) | < 3.11 | R significantly greater than I (t-test, p < 0.05) | 4.39 | 4.37 | Y | Y |
| Turbidity (Depth-averaged) | > 28.14 | I ≥ 1.2 R (15.24) | > 38.32 | I ≥ 1.3 R (16.51) | 16.82 | 12.70 | Y | Y |
| SS (Depth-averaged) | > 37.88 | I ≥ 1.2 R (16.10) | > 61.92 | I ≥ 1.3 R (17.44) | 18.23 | 13.42 | Y | Y |

Note: (a) I = Impact; R = Reference Stations

Table B18: Impact Water Quality Monitoring for Dredging Activities during Mid-flood Tide for 30 June 2010

| Station | Downstream (Impact) | | |
|----------------------|-------------------------------|--------------------|--------|
| Time (hh:mm) | 07:09-09:41 | | |
| Monitoring Depth (m) | Depth Average | Surface and Middle | Bottom |
| D.O. (mg/L) | N/A | 4.38 | 4.15 |
| Turbidity (NTU) | 8.01 | N/A | N/A |
| SS (mg/L) | 8.23 | N/A | N/A |
| Remarks | Dredging works were observed. | | |

| Station | Upstream (Reference) | | |
|----------------------|-------------------------------|--------------------|--------|
| Time (hh:mm) | 07:09-09:41 | | |
| Monitoring Depth (m) | Depth Average | Surface and Middle | Bottom |
| D.O. (mg/L) | N/A | 4.94 | 4.32 |
| Turbidity (NTU) | 7.13 | N/A | N/A |
| SS (mg/L) | 7.00 | N/A | N/A |
| Remarks | Dredging works were observed. | | |

| Station | Ma Wan | | |
|----------------------|---------------|--------------------|--------|
| Time (hh:mm) | 07:09-09:41 | | |
| Monitoring Depth (m) | Depth Average | Surface and Middle | Bottom |
| D.O. (mg/L) | N/A | 4.41 | 3.84 |
| Turbidity (NTU) | 4.22 | N/A | N/A |
| SS (mg/L) | 5.67 | N/A | N/A |
| Remarks | | | |

Compliance with Action and Limit Levels

| Parameter | Action Level | | Limit Level | | Mean Value at Impact Stations | Mean Value at Reference Stations | Compliance with Action level | Compliance with Limit Level |
|----------------------------|-------------------------------|---|-------------------------------|---|-------------------------------|----------------------------------|------------------------------|-----------------------------|
| | Mean Value at Impact Stations | Comparison between I and R ^(a) | Mean Value at Impact Stations | Comparison between I and R ^(a) | | | | |
| DO (Bottom) | < 2.96 | R significantly greater than I (t-test, p < 0.05) | < 2.00 | R significantly greater than I (t-test, p < 0.05) | 4.15 | 4.32 | Y | Y |
| DO (Surface and Mid Depth) | < 3.76 | R significantly greater than I (t-test, p < 0.05) | < 3.11 | R significantly greater than I (t-test, p < 0.05) | 4.38 | 4.94 | Y | Y |
| Turbidity (Depth-averaged) | > 28.14 | I ≥ 1.2 R (8.56) | > 38.32 | I ≥ 1.3 R (9.27) | 8.01 | 7.13 | Y | Y |
| SS (Depth-averaged) | > 37.88 | I ≥ 1.2 R (8.40) | > 61.92 | I ≥ 1.3 R (9.10) | 8.23 | 7.00 | Y | Y |

Note: (a) I = Impact; R = Reference Stations